

BANNER FULFILLMENT



Printing & Dye-Sublimation Experts



- BANNERS -



- SIGNS -



- APPAREL -



- DISPLAYS -



- FLAGS -

LOOK FOR THESE ICONS INDICATING SPECIAL PRODUCT FEATURES

- ★ POPULAR PRODUCT
- 🕒 24-48 HOUR PRINT TURNAROUND
- ✚ FULL-COLOR DIGITAL PRINTING
- 💧 FULL-COLOR DYE-SUB PRINTING
- 🔢 AVAILABLE DOUBLE-SIDED
- 🔍 HIGH-RES FOR CLOSE VIEWING
- 📏² SOLD BY THE SQUARE FOOT
- 📏 CUSTOM SIZES AVAILABLE
- ☀️ RECOMMENDED OUTDOOR USE
- ⚙️ KIT w/ REPLACEABLE SIGNAGE
- 🌟 NEW PRODUCT

Art setup fee is still just \$10 {P} per design when you submit print-ready files.
Additional design service is available for \$60/hr {Z} with a \$50 {P} minimum charge.
Please visit www.bannerfulfillment.com for downloadable design templates.



PRODUCT GUIDE

BANNERS

| | |
|--|----|
| About Vinyl Banners | 05 |
| 13 oz Standard Vinyl Banner | 06 |
| 13 oz Economy Vinyl Banner | 07 |
| 18 oz Vinyl Banner | 08 |
| Mesh Vinyl Banner | 09 |
| High-Res Vinyl Banner | 09 |
| Pennant Banner | 10 |
| Pole Banner | 11 |
| About XL Vinyl Banners | 12 |
| XL Mesh Banner..... | 12 |
| XL 13 oz Vinyl Banner | 13 |
| XL 18 oz Vinyl Banner | 13 |
| Double-Sided 18 oz Vinyl Banner | 14 |
| About Fabric and Canvas Banners | 15 |
| Satin Fabric Banner..... | 16 |
| Matte Fabric Banner..... | 16 |
| Canvas Banner | 17 |
| Banner Finishing Options | 18 |
| Compare All Banners | 19 |

RETRACTABLE BANNERS

| | |
|--|-------|
| About Retractable Banners | 20-21 |
| Economy Retractable..... | 22 |
| Telescoping Pro Retractable..... | 23 |

| | |
|---------------------------------------|----|
| Tabletop Retractable | 24 |
| Deluxe Mini Retractable..... | 25 |
| Double-Sided Indoor Retractable | 26 |
| Double-Sided Outdoor Retractable..... | 27 |

SIGNS

| | |
|--|----|
| About Signs | 28 |
| Coroplast Yard Sign | 29 |
| Vehicle Magnet..... | 30 |
| EZ Dot Adhesive Vinyl | 31 |
| Smooth Adhesive Film..... | 32 |
| Adhesive Non-Slip Floor Sign | 33 |
| Adhesive Window Sign..... | 34 |
| Perforated Window Sign..... | 35 |
| Adhesive Fabric Wall Sign | 36 |
| Adhesive Accents by Jennifer Taylor | 37 |
| Adhesive Sign Usage and Removal | 38 |
| Vinyl Poster..... | 39 |
| Gallery Canvas Print..... | 40 |

FLAGS

| | |
|---------------------------|-------|
| About Flags | 41 |
| Deluxe Feather Flag..... | 42-43 |
| Value Flags..... | 44 |
| Value Rectangle Flag..... | 45 |

| | |
|----------------------------|----|
| Value Tear Drop Flag | 46 |
| Value Feather Flag..... | 47 |
| Compare Flags | 48 |

DISPLAYS

| | |
|-------------------------------------|-------|
| About Indoor Displays | 49 |
| X-Stand Banner Kit | 50 |
| Adjustable Display Kit..... | 51 |
| Cantilever Fabric Display Kit | 52 |
| Fabric Backdrop Display | 53 |
| Tension Fabric Display | 54-55 |
| Satin Fabric Table Throw | 56 |
| Matte Fabric Table Throw | 57 |
| About Outdoor Displays | 58 |
| A-Frame Sidewalk Kit..... | 59 |
| Flex Tower Banner Kit..... | 60 |
| Flex Sidewalk Sign Kit | 61 |
| Outdoor Banner Frame Kit | 62-63 |

APPAREL

| | |
|--|-------|
| About Dye-Sub Apparel | 64-65 |
| Short Sleeve Crew Neck Shirt..... | 66 |
| Short Sleeve V-Neck Shirt | 67 |
| Unisex Short Sleeve Soccer Crew Shirt... | 67 |
| Unisex Long Sleeve Crew T-Shirt | 68 |

| | |
|---------------------------------------|----|
| Unisex Short Sleeve Polo Shirt | 68 |
| Apparel Ordering Process | 69 |

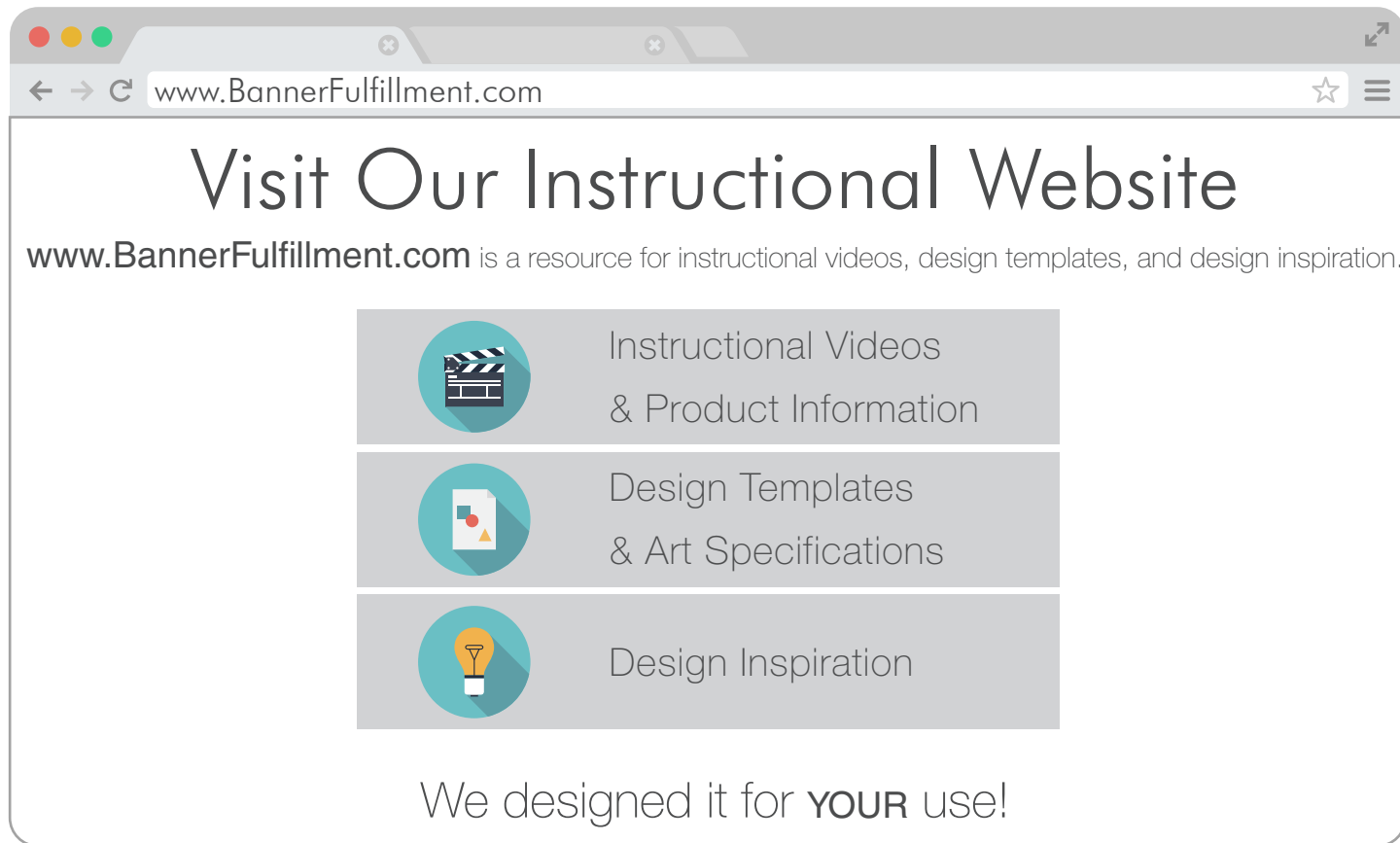
CUSTOM ORDER MATERIALS

SAMPLE PACKETS

ACCESSORIES

| | |
|-----------------------------|----|
| Zip Ties..... | 72 |
| Rope..... | 72 |
| Bungee Cords..... | 72 |
| Standard Suction Cups..... | 72 |
| Velcro Adhesive Strips..... | 72 |
| Yard Sign H-Stakes | 72 |

ADDITIONAL INFO



VINYL BANNERS

Get your message noticed! Our full-color customizable vinyl banners are perfect for all your indoor-outdoor advertising needs. Vinyl banners are affordable, durable, and extremely versatile. Promote a store sale or announce the celebration of a special occasion with our vast array of banner materials and hundreds of size choices.

- »All vinyl banners are digitally printed in vivid full color using UV-resistant ink
- »Fully customizable; create a one-of-a-kind display that looks great for years
- »Perimeter hems and grommets included at no charge (when applicable)
- »Priced by the square foot
- »No minimum quantity or order amount on products in this category
- »Custom sizes are available; simply round up to the next standard size for pricing (example: a 2'6" x 5'6" banner is rounded up to 3'x6' to determine pricing)

WE'VE IMPROVED OUR DISCOUNT STRUCTURE!

All volume discounts for vinyl banners are now based on the total square footage of identical items (same product, same design, same size), and now your discounts will kick in at lower quantities. The more you order, the more you'll save per item!



{ FREE HEMS
& GROMMETS }





13 OZ STANDARD VINYL BANNER

Printed on durable 13 oz standard vinyl with scrim reinforcement, built tough for outdoor use with vibrant color and a print quality sharp enough for close viewing.

- » Our most popular product, great for indoor-or-outdoor use
- » Printed on deluxe reinforced 13 oz, 1000x1000 denier, tear-resistant, and waterproof vinyl
- » Glossy finish for added color depth
- » Standard finishing includes heat-welded hems and perimeter grommets every 3-4 feet.
- » Pole pockets are available for sizes 2'x2' to 4'x12'; additional fee of \$4.17 {R} per banner {one pocket} or \$6.67 {R} per banner {two pockets} applies
- » Most orders ship 1-2 business days after proof approval
- » Available in sizes 2'x2' to 5'x35'; for larger sizes, see our XL 13 oz Vinyl Banners [\[page 13\]](#)



ARTWORK SPECIFICATIONS

Print: Digital Full Color - CMYK - UV-Resistant Inks

Resolution: 100 DPI at Full Scale Recommended

Bleed: 0.25"

SIZING

Maximum height: 5 feet

Maximum width: 35 feet

PRICING {P}

| 1 TO 100 SQ FT | 101 TO 250 SQ FT | 251 TO 500 SQ FT | 501 TO 1000 SQ FT | 1001 TO 2500 SQ FT |
|-----------------|------------------|------------------|-------------------|--------------------|
| \$3.18 /sq. ft. | \$2.98 /sq. ft. | \$2.78 /sq. ft. | \$2.58 /sq. ft. | Call for a quote |



NEW PRINT OPTION!

13 OZ ECONOMY VINYL BANNER

Just out! We're proud to offer a new option in pricing and turnaround with our new line of Economy 13 oz Vinyl Banners!

Here at Wholesale Banners Online we've always taken a position of "quality first" when it comes to banner production. Nothing, as you know, goes out our door without the sharpest possible print. Of all the technical demands involved in making the highest-level quality banners, the most critical is printing speed: slower printing produces a better print, which in turn affects the turnaround time. While we have no intention of changing our standards in bringing you the best banners in the business, we are pleased to announce our new line of competitively-priced Economy 13 oz Banners! We now utilize a new high-speed printing option, printing your order with greater savings.

Our new Economy 13 oz Banners are:

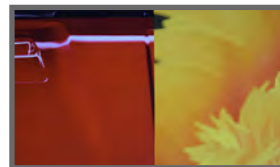
- » Ideal for outdoor short-term banners, highway signs, and any use where close scrutiny of the print is not a concern
- » Printed on the same durable 1000x1000 denier material with the same finishing options and same quality UV-resistant inks as our Standard 13 oz Banners
- » Available at reduced prices with quicker delivery times for larger orders; volume discounts start at 101 square feet
- » Pole pockets are available for sizes 2'x2' to 4'x12'; additional fee of \$4.17 {R} per banner (one pocket) or \$6.67 {R} per banner (two pockets) applies

PRICING {P}

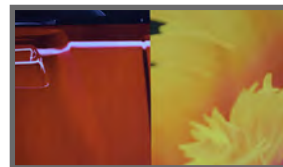
| 1 TO 100 SQ FT | 101 TO 250 SQ FT | 251 TO 500 SQ FT | 501 TO 1000 SQ FT | 1001 TO 2500 SQ FT |
|-----------------|------------------|------------------|-------------------|--------------------|
| \$2.58 /sq. ft. | \$2.44 /sq. ft. | \$2.30 /sq. ft. | \$2.18 /sq. ft. | Call for a quote |



With a 360x720 DPI digital print, some slight banding may be noticeable under close inspection of our Economy 13 oz Vinyl Banners, but our digital print still has sharper lines and less overspray than many of our competitors' banners. (Print banding occurs mainly on solid-color backgrounds and is rarely noticeable on photographic artwork.)



{Standard 720x720 print example}



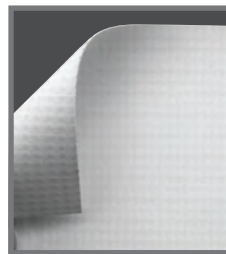
{Economy 360x720 print example}



18 OZ VINYL BANNER

The most durable vinyl material we sell, designed specifically for outdoor use.
Printed in full color on tough 18 oz vinyl.

- » Printed on tear and abrasion-resistant, waterproof, semi-gloss vinyl with an industry leading 1000 x 1000 denier count
- » Stands up well to extreme conditions
- » Standard finishing includes heat-welded perimeter seams and grommets every 3-4 feet; pole pockets not available for this product
- » Most orders print and ship 1-2 business days after proof approval
- » Available in sizes 2'x2' to 4'x35'; for larger sizes, see our XL 18 oz Vinyl Banners [\[page 13\]](#)
- » Double-sided version available [\[page 14\]](#)



ARTWORK SPECIFICATIONS

Print: Digital Full Color - CMYK - UV-Resistant Inks
Resolution: 100 DPI at Full Scale Recommended
Bleed: 0.25"

SIZING

Maximum height: 4 feet
Maximum width: 35 feet

PRICING {P}

| 1 TO 100 SQ FT | 101 TO 250 SQ FT | 251 TO 500 SQ FT | 501 TO 1000 SQ FT | 1001 TO 2500 SQ FT |
|-----------------|------------------|------------------|-------------------|--------------------|
| \$3.78 /sq. ft. | \$3.58 /sq. ft. | \$3.38 /sq. ft. | \$3.18 /sq. ft. | Call for a quote |

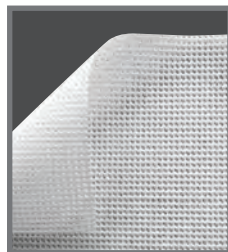




MESH VINYL BANNER

For a banner that will last in strong winds, choose a mesh vinyl banner. This 9 oz small-hole mesh material comprises interwoven fibers allowing wind to pass through, reducing strain and increasing the life of the banner.

- » 9 oz coated polyester scrim mesh, high wind grade, designed to withstand most conditions
- » Small hole mesh {85/15} provides larger printing surface for enhanced print quality
- » Standard finishing includes heat-welded hems and perimeter grommets every 3-4 feet; pole pockets not available
- » Most orders print and ship 1-2 business days after proof approval
- » Available in sizes 2'x2' to 5'x35'; for larger sizes, see XL Mesh Banners [\[page 12\]](#)



SIZING

Maximum height: 5 feet
Maximum width: 35 feet

ARTWORK SPECIFICATIONS

Print: Digital Full Color - CMYK - UV-Resistant Inks
Resolution: 100 DPI at Full Scale Recommended
Bleed: 0.25"



PRICING {P}

| 1 TO 100 SQ FT | 101 TO 250 SQ FT | 251 TO 500 SQ FT | 501 TO 1000 SQ FT | 1001 TO 2500 SQ FT |
|-----------------|------------------|------------------|-------------------|--------------------|
| \$3.98 /sq. ft. | \$3.78 /sq. ft. | \$3.58 /sq. ft. | \$3.38 /sq. ft. | Call for a quote |



HIGH-RES VINYL BANNER

High-Res Banners are perfect for trade shows or indoor displays. Our sharpest, highest-resolution banners will look great up close or from across a room!

- » Printed on bright white 13 oz smooth vinyl {scrimless} with a semi-gloss magazine matte finish
- » Blockout layer prevents light from showing through
- » Ideal for indoor close viewing displays
- » Standard finishing includes heat-welded hems and perimeter grommets every 3-4 feet; pole pockets available for \$4.17 {R} per banner {one pocket} or \$6.67 {R} per banner {two pockets}
- » Most orders ship 1-2 business days after proof approval
- » Available in sizes 2'x2' to 5'x35'



ARTWORK SPECIFICATIONS

Print: Digital Full Color - CMYK - UV-Resistant Inks
Resolution: 150-200 DPI at Full Scale Recommended
Bleed: 0.25"

PRICING {P}

| 1 TO 100 SQ FT | 101 TO 250 SQ FT | 251 TO 500 SQ FT | 501 TO 1000 SQ FT | 1001 TO 2500 SQ FT |
|-----------------|------------------|------------------|-------------------|--------------------|
| \$3.98 /sq. ft. | \$3.78 /sq. ft. | \$3.58 /sq. ft. | \$3.38 /sq. ft. | Call for a quote |



SIZING

Maximum height: 5 feet
Maximum width: 35 feet



PENNANT BANNER

Perfect for commemorating student and athletic achievements or advertising in-store promotions, our Pennant Banners are produced with vibrant colors and a beautiful finish.

- » Printed on the same 15 oz PET as our Vinyl Posters *(page 39)*
- » Non-curl material is engineered to hang flat with a 3-point bottom edge
- » Available single or double-sided: double-sided pennants are printed on a single sheet, folded, and adhered
- » Standard finishing includes smooth edges cut to your artwork and grommets in top corners; top pole pocket available for \$4.17 {R} per banner
- » Full color: print any photo or graphic
- » Indoor use only
- » Most orders ship 1-2 business days after proof approval

ARTWORK SPECIFICATIONS

Print: Digital Full Color - CMYK - UV-Resistant Inks
Resolution: 150 DPI at Full Scale Recommended

SIZES & PRICING {R} *(each)*

| SIZE | SIDES | QTY 1-9 | QTY 10-24 | QTY 25-49 | QTY 50-99 | QTY 100+ |
|---------|--------|----------|-----------|-----------|-----------|----------|
| 24"x36" | Single | \$35.00 | \$32.50 | \$30.00 | \$27.50 | \$25.00 |
| | Double | \$61.67 | \$57.92 | \$54.17 | \$50.42 | \$46.67 |
| 24"x42" | Single | \$40.83 | \$37.92 | \$35.00 | \$32.08 | \$29.17 |
| | Double | \$71.67 | \$67.08 | \$62.50 | \$57.92 | \$53.33 |
| 24"x48" | Single | \$46.67 | \$43.33 | \$40.00 | \$36.67 | \$33.33 |
| | Double | \$81.67 | \$76.67 | \$71.67 | \$66.67 | \$61.67 |
| 36"x48" | Single | \$70.00 | \$65.00 | \$60.00 | \$55.00 | \$50.00 |
| | Double | \$121.67 | \$114.17 | \$106.67 | \$99.17 | \$91.67 |
| 36"x54" | Single | \$78.75 | \$73.12 | \$67.50 | \$61.87 | \$56.25 |
| | Double | \$135.84 | \$127.92 | \$120.00 | \$112.09 | \$104.17 |
| 36"x60" | Single | \$87.50 | \$81.25 | \$75.00 | \$68.75 | \$62.50 |
| | Double | \$150.00 | \$141.67 | \$133.34 | \$125.00 | \$116.67 |
| 48"x60" | Single | \$116.57 | \$108.34 | \$100.00 | \$91.67 | \$83.34 |
| | Double | \$198.75 | \$187.92 | \$177.09 | \$166.25 | \$155.42 |
| 48"x72" | Single | \$140.00 | \$130.00 | \$120.00 | \$110.00 | \$100.00 |
| | Double | \$236.67 | \$224.17 | \$211.67 | \$199.17 | \$186.67 |



POLE BANNER

The visibility of our Pole Banners makes them a great way to welcome visitors to your community, call attention to your business, raise awareness for upcoming events, or spread a little holiday cheer. This durable banner and hardware set installs easily and is built to withstand tough outdoor weather conditions. Our customers prefer our Pole Banner hardware to others for a simple reason: our Pole Arms are designed to cantilever away from one another, keeping your Pole Banners taut and sharp-looking. Now available with two hardware options.

THE COMPLETE INSTALLATION KIT INCLUDES:

- » One double-sided banner with top and bottom pole pockets and corner grommets
- » A set of two pole brackets with die-cast aluminum bases and strong fiberglass rods
- » Four Quick-Release Steel Bands to fasten the hardware to a street pole

The Banner and Brackets Only Kit includes all of the above except for the Quick-Release Steel bands.

SIZES & PRICING *[each]*

| SIZE | QTY 1-4 | QTY 5-9 | QTY 10-24 | QTY 25-49 | QTY 50+ |
|---|----------|----------|-----------|-----------|----------|
| 30"w x 48"h - Complete Installation Kit [T] | \$172.91 | \$146.97 | \$138.33 | \$129.68 | \$121.04 |
| 30"w x 48"h - Banner and Brackets only [T] | \$155.76 | \$132.40 | \$124.61 | \$116.82 | \$109.03 |
| 30"w x 48"h - Replacement Graphic [S] | \$90.74 | \$86.13 | \$81.51 | \$73.82 | \$63.83 |
| 30"w x 54"h - Complete Installation Kit [T] | \$184.34 | \$156.69 | \$147.47 | \$138.26 | \$129.04 |
| 30"w x 54"h - Banner and Brackets only [T] | \$167.19 | \$142.11 | \$133.75 | \$125.39 | \$117.04 |
| 30"w x 54"h - Replacement Graphic [S] | \$98.82 | \$89.97 | \$85.36 | \$75.36 | \$66.13 |
| 30"w x 60"h - Complete Installation Kit [T] | \$195.77 | \$166.41 | \$156.62 | \$146.83 | \$137.04 |
| 30"w x 60"h - Banner and Brackets only [T] | \$178.63 | \$151.83 | \$142.90 | \$133.97 | \$125.04 |
| 30"w x 60"h - Replacement Graphic [S] | \$108.43 | \$98.82 | \$89.20 | \$76.90 | \$69.59 |
| 30"w x 66"h - Complete Installation Kit [T] | \$207.21 | \$176.12 | \$165.76 | \$155.40 | \$145.04 |
| 30"w x 66"h - Banner and Brackets only [T] | \$190.06 | \$161.55 | \$152.05 | \$142.54 | \$133.04 |
| 30"w x 66"h - Replacement Graphic [S] | \$118.04 | \$107.28 | \$96.89 | \$83.05 | \$75.75 |
| 30"w x 72"h - Complete Installation Kit [T] | \$218.64 | \$185.84 | \$174.91 | \$163.98 | \$153.05 |
| 30"w x 72"h - Banner and Brackets only [T] | \$201.49 | \$171.27 | \$161.19 | \$151.12 | \$141.04 |
| 30"w x 72"h - Replacement Graphic [S] | \$127.65 | \$116.12 | \$104.58 | \$89.59 | \$81.13 |

HARDWARE

- » Pole brackets are designed to flex with the wind, reducing stress while keeping your banner taut
- » Designed for continual outdoor use
- » Installs easily on round, square, octagonal, or fluted poles

BANNERS

- » Printed with UV-resistant inks on double-sided 18 oz outdoor vinyl with internal blackout layer
- » Each pole banner includes top and bottom pole pockets and corner grommets
- » Matte finish helps reduce glare
- » Same image printed on front and back unless otherwise requested
- » Most orders ship 4-5 days after proof approval



ARTWORK

SPECIFICATIONS

Print: Digital Full Color - CMYK
 - UV-Resistant Inks
 Resolution: 100 DPI at Full
 Scale Recommended Art
 templates for this product can
 be downloaded
 at www.bannerfulfillment.com



XL VINYL BANNERS



From building wraps to tradeshow backdrops, our XL Vinyl Banners are designed to be noticed. These state-of-the-art banners are printed on the highest quality material around.

- » Digitally printed in full color using UV-resistant inks
- » All XL Vinyl Banners include perimeter grommets for easy hanging
- » Sold by the square foot. Custom sizes are also available. To find pricing for a custom size, round up to the next foot
- » Prices shown include standard finishing. Special finishing requests may result in additional charges
- » Please note that most XL Banners will be folded for shipping, so some creasing is to be expected. If it is important to have a smooth banner, you may contact us to arrange a freight shipment
- » No minimum quantity or order amount on products in this category

How do I know if the banner I need falls in the "XL" category?

- 1) If the short side of the banner is longer than 5 feet, then it is an XL Banner. (longer than 4 feet for 18 oz Vinyl Banners).
- 2) Any banner longer than 35 feet is also considered an XL Banner.

{ FREE HEMS & GROMMETS }



XL MESH BANNER

These large format banners are the perfect choice for outdoor displays with significant wind exposure. This small-hole mesh material allows wind to easily pass through and greatly reduces strain at the banner's edges.

- » Printed on 8 oz standard 63/37 hole mesh vinyl - 67% printed surface, 37% open space
- » Available in sizes from 6'x6' to 16'x150'; for smaller sizes, see Mesh Vinyl Banners (page 9)
- » Standard finishing includes 1" heat welded hems and perimeter grommets. Perimeter webbing is recommended, available for \$1.00 {Y} per linear foot; pole pockets not available
- » Recommended for large outdoor displays in windy conditions
- » Stronger than banners with wind slits
- » Most orders print and ship 4-5 days after proof approval

PRICING { \$ }

| 1 TO 100 SQ FT | 101 TO 250 SQ FT | 251 TO 500 SQ FT | 501 TO 1000 SQ FT | 1001+ SQ FT |
|-----------------|------------------|------------------|-------------------|----------------|
| \$3.06 /sq. ft. | \$2.91 /sq. ft. | \$2.54 /sq. ft. | \$2.08 /sq. ft. | Call for quote |

ARTWORK SPECIFICATIONS

Print: Digital Full Color - CMYK - UV-Resistant Inks

Resolution: 100 DPI at Full Scale Recommended



SIZING

Maximum height: 16 feet
Maximum width: 150 feet



XL 13 OZ VINYL BANNER

Our XL 13 oz Vinyl Banners are perfect for large-scale promotions. These larger-than-life banners are printed on 13 oz high-quality scrim vinyl {1000x1000 denier} that is durable yet lightweight for easy handling.

- » Printed on strong 13 oz matte vinyl in sizes of 6'x6' up to 50'x150'; for smaller sizes, please see 13 oz Vinyl Banners [\[page 6\]](#)
- » Recommended for outdoor use
- » Standard finishing includes 1" hems and perimeter grommets; Sizes over 16' in width or over 150' in length will be tiled from separate sheets
- » Pole pockets are available for \$4.17 {R} per banner (one pocket) or \$6.67 {R} per banner (two pockets); pockets are 3" flat for 1" diameter poles
- » Most orders print and ship 4-5 business days after proof approval
- » XL Banners will be folded for shipping, unless otherwise requested



SIZING

Maximum height: 50 feet
Maximum width: 150 feet

PRICING {S}

| 1 TO 100 SQ FT | 101 TO 250 SQ FT | 251 TO 500 SQ FT | 501 TO 1000 SQ FT | 1001+ SQ FT |
|-----------------|------------------|------------------|-------------------|----------------|
| \$3.37 /sq. ft. | \$2.75 /sq. ft. | \$2.38 /sq. ft. | \$2.08 /sq. ft. | Call for quote |

ARTWORK SPECIFICATIONS

Print: Digital Full Color - CMYK - UV-Resistant Inks
Resolution: 100 DPI at Full Scale Recommended



XL 18 OZ VINYL BANNER

When the job requires a large durable banner that can stand up to the elements, our premium XL 18 oz Vinyl Banners are second-to-none. Printed on heavyweight, high-strength 18 oz vinyl, these banners are designed for use in the most demanding of environments when only the very best will do.

- » Printed on heavy duty 18 oz matte vinyl with blockout layer for 100% opacity
- » Ultra-durable scrim vinyl with 1000x1000 denier; when installed properly, this material has almost 100% tear resistance from wind
- » Available in sizes 5'x5' to 50'x150'; Sizes over 10' in width or over 150' in length will be tiled from separate sheets
- » Standard finishing includes 1" hems and perimeter grommets
- » Pole pockets are available for \$4.17 {R} per banner (one pocket) or \$6.67 {R} per banner (two pockets); pockets are 3" flat for 1" diameter poles
- » Most orders ship 4-5 business days after proof approval
- » XL Banners will be folded for shipping, unless otherwise requested
- » Available in smaller sizes [\[page 8\]](#) and double-sided [\[page 14\]](#)

PRICING {U}

| 1 TO 50 SQ FT | 51 TO 100 SQ FT | 101 TO 250 SQ FT | 251 TO 500 SQ FT | 501 TO 1000 SQ FT |
|-----------------|-----------------|------------------|------------------|-------------------|
| \$5.27 /sq. ft. | \$4.25 /sq. ft. | \$3.72 /sq. ft. | \$3.27 /sq. ft. | \$2.92 /sq. ft. |

*1001+ SQ FT - CALL FOR QUOTE.

ARTWORK SPECIFICATIONS

Print: Digital Full Color - CMYK - UV-Resistant Inks
Resolution: 100 DPI at Full Scale Recommended

SIZING

Maximum height: 50 feet
Maximum width: 150 feet



Double-Sided Banners give you more exposure for your money!

These banners feature a full-bleed print on both sides of the material so you get twice as much visibility from one sign. Banners are printed in full color with UV-resistant ink for vivid colors that resist fading. Sold by the square foot. Custom sizes are also available.

All double-sided banners require a \$75 {R} minimum order per design + \$10.00 {P} setup fee.

Price includes standard finishing. Special finishing requests require a custom quote.

{ ☀️ 🌿 x2 Ft² ☾ }

DOUBLE-SIDED 18 OZ VINYL BANNER

Durable double-sided 18 oz vinyl banners designed for outdoor use. Two-sided print provides maximum visibility that is sure to be noticed.

- » Printed on reinforced 18 oz scrim vinyl with 1000x1000 denier, designed to withstand outdoor conditions
- » Matte finish with blockout layer for 100% opacity
- » Double-sided print with full-bleed artwork on both sides
- » Standard finishing includes 1" hems and perimeter grommets
- » Pole pockets available for \$4.17 {R} per banner (one pocket) or \$6.67 {R} per banner (two pockets)
- » Most orders print and ship 4-5 business days after proof approval
- » Same material as our XL 18 oz Vinyl Banner *[page 13]*

PRICING {S}

| | |
|-------------------|-----------------|
| 1 TO 50 SQ FT | \$7.67 /sq. ft. |
| 51 TO 100 SQ FT | \$6.91 /sq. ft. |
| 101 TO 250 SQ FT | \$6.14 /sq. ft. |
| 251 TO 500 SQ FT | \$5.15 /sq. ft. |
| 501 TO 1000 SQ FT | \$3.98 /sq. ft. |
| 1001+ SQ FT | Call for quote |

ARTWORK SPECIFICATIONS

Print: Digital Full Color - CMYK - UV-Resistant Inks

Resolution: 100-150 DPI at Full Scale Recommended

Edges: A solid-color border of 3" is recommended for double-sided banners.



SIZING

Maximum height: 10 feet

Maximum width: 150 feet

{ FREE HEMS
& GROMMETS }

FABRIC & CANVAS BANNERS

Fabric and Canvas Banners are elegant alternatives to vinyl when you need a more upscale look for your indoor display.

Fabric Banners are made with a unique digital dye-sublimation process which saturates the material and results in a long-lasting vibrant print. Available single-sided or double-sided with a blockout layer, recommended for indoor or short-term outdoor displays. Standard finishing includes grommets and sewn hems; pole pockets are also available.

Canvas Banners are printed digitally in full color on tight-weave cotton duck canvas and are attractive hanging displays for any interior. Available single-sided only. Standard finishing includes grommets and double-sided adhesive strip hems.

{ FREE HEMS
& GROMMETS }





SATIN FABRIC BANNER

Satin Fabric Banners are an excellent alternative to vinyl banners when you need a vibrant indoor display. We use a unique digital dye-sublimation process which saturates the fabric material and results in a beautiful long-lasting print. Perfect for trade shows, churches, and sports facilities. Recommended for indoor or short-term outdoor use.



- » 9 oz polyester with satin finish, recommended for indoor displays
- » Full-color, dye-sublimated print. The wrinkle-resistant fabric is lightweight, yet durable
- » Standard finishing includes sewn hems and perimeter grommets every few feet; pole pockets available for \$4.17 {R} per banner for one pocket or \$6.67 {R} per banner for two pockets
- » Most orders ship 7-8 business days after proof approval



MATTE FABRIC BANNER

Matte Fabric Banners are printed on a soft yet durable low-glare fabric material. Perfect when you need a nonreflective lightweight indoor or short-term outdoor display.

- » Durable and wrinkle-resistant 8 oz polyester with smooth matte finish
- » Great for step-&-repeat photography backdrops
- » Full-color, dye-sublimated print provides great color saturation
- » Recommended for indoor or low-stress outdoor environments
- » Standard finishing includes sewn hems and perimeter grommets every few feet; pole pockets available for \$4.17 {R} per banner for one pocket or \$6.67 {R} per banner for two pockets
- » Most orders ship 7-8 business days after proof approval



SATIN & MATTE FABRIC BANNER PRICING

| | Single-sided {R} | Double-sided {T} |
|--------------------|------------------|------------------|
| 1 TO 350 SQ FT | \$4.98 /sq. ft. | \$8.93 /sq. ft. |
| 351 TO 750 SQ FT | \$4.58 /sq. ft. | \$8.56 /sq. ft. |
| 751 TO 2000 SQ FT | \$4.15 /sq. ft. | \$7.85 /sq. ft. |
| 2001 TO 3500 SQ FT | \$3.75 /sq. ft. | \$7.13 /sq. ft. |
| 3501 TO 5000 SQ FT | \$3.48 /sq. ft. | \$6.42 /sq. ft. |
| 5001+ SQ FT | Call for quote | Call for quote |

ARTWORK SPECIFICATIONS

Print: Digital Full Color - CMYK - UV-Resistant Inks - Dye-Sublimated

Resolution: 150 DPI at Full Scale Recommended

Bleed: 1"



SIZING

Maximum height: 20 feet

Maximum width: 150 feet



CANVAS BANNER

An elegant banner option, perfect for events where extra superior quality, great detail, and vibrant colors are necessary. The textured material adds great color depth with a semi-gloss finish.

- » Printed on 14 mil tight weave cotton duck canvas with a semi-gloss finish
- » Standard finishing includes 1" permanent tape hems and grommets every 3-4 feet around the perimeter; pole pockets are not available for this product
- » Ideal for indoor high-quality banner displays
- » Most orders ship 2-3 business days after proof approval

ARTWORK SPECIFICATIONS

Print: Digital Full Color - CMYK - UV-Resistant Inks

Resolution: 150-200 DPI at Full Scale Recommended

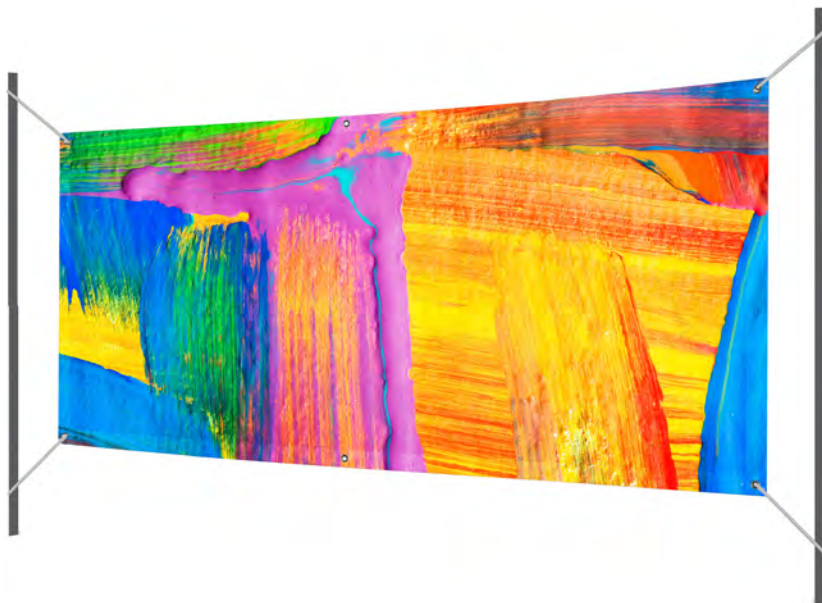
Bleed: 0.25"



SIZING

Maximum height: 4 feet

Maximum width: 12 feet



PRICING {R}

| 1 TO 100 SQ FT | 101 TO 250 SQ FT | 251 TO 500 SQ FT | 501 TO 1000 SQ FT | 1001+ SQ FT |
|-----------------|------------------|------------------|-------------------|----------------|
| \$4.98 /sq. ft. | \$4.65 /sq. ft. | \$4.48 /sq. ft. | \$4.32 /sq. ft. | Call for quote |

STANDARD FINISHING OPTIONS

In order to keep our banner prices low for all customers, we have identified our most economical production workflows and established a set of standard banner finishing options. Special requests that fall outside of these standard finishing options may require an additional production setup fee or a special quote.

See the chart on page 19 to determine if the finishing options listed below are available for the banner you are ordering.

HEMS

Standard banner hems are 1" and can be added to any and all banner edges at no extra cost

- Hems are default except for Fabric Banners (sewn hems) and Canvas Banners (double-sided tape hems)
- Custom-sized hems other than 1" require a special quote and are only available for Fabric Banners, XL Banners, and Double-Sided Banners. Custom-sized hems may be sewn instead of heat welded

GROMMETS

Grommets may be added to the corners or evenly spaced every few feet on any and all edges at no extra cost. Requests for special grommet placement or spacing will require a production setup fee.



POLE POCKETS

Standard pole pocket size is 3" flat (fits a 1" pole), applied to one edge or two opposite edges. Pole pocket options differ by product type:

13 OZ VINYL BANNERS, HIGH-RES VINYL BANNERS, SATIN FABRIC BANNERS, AND MATTE FABRIC BANNERS:

- 3" flat only
- Pole pockets for 13 oz Vinyl Banners and High-Res Vinyl Banners are available on sizes 2x2 to 4x12 only
- Satin/Matte Fabric Banners have sewn pockets with no size restrictions

XL 13 OZ VINYL BANNERS, XL 18 OZ VINYL BANNERS, AND DOUBLE-SIDED 18 OZ VINYL BANNERS:

- Available for all banner sizes
- Prices shown are for 3" flat pocket only. Other pocket sizes require a custom quote.
- Custom sized pockets may be available

1 pocket - \$4.17
2 pockets - \$6.67

Special pole pocket requests that fall outside of these guidelines will require a custom quote.



BANNER COMPARISON

| | | | | | | | | | | | | | | |
|--------------|-------------------|-------------------|-------------|-------------------|--|--------------------------------|------------------------------------|--------------------------|-------------|-----------------------|----------------|----------|------------------------|-------------------|
| Catalog Page | Minimum size {ft} | Maximum size {ft} | Stock Class | Starting at Price | Production Time (after proof approval) | Minimum Recommended Resolution | Outdoor Use: low to moderate winds | Outdoor Use: heavy winds | Indoor only | Heat-welded hems (1") | Sewn hems (1") | Grommets | Pole pockets (3" flat) | Perimeter Webbing |
|--------------|-------------------|-------------------|-------------|-------------------|--|--------------------------------|------------------------------------|--------------------------|-------------|-----------------------|----------------|----------|------------------------|-------------------|

| | # | Sizes | | C | Price Per Sq. Ft. | Business Days | Print Resolution | Recommended Use | | | Finishing Options | | | |
|-----------------------------|----|-------|--------|---|-------------------|---------------|------------------|-----------------|---|---|-------------------|---|---|-----------------|
| 13 OZ STANDARD VINYL BANNER | 6 | 2x2 | 5x35 | P | \$1.59 | 1-2 | 100 ppi | ● | | | ● | | ● | 2x2 - 4x12 only |
| 13 OZ ECONOMY VINYL BANNER | 7 | 2x2 | 5x35 | P | \$1.29 | 1-2 | 100 ppi | ● | | | ● | | ● | 2x2 - 4x12 only |
| 18 OZ VINYL BANNER | 8 | 2x2 | 4x35 | P | \$1.89 | 1-2 | 100 ppi | | ● | | ● | | ● | |
| MESH VINYL BANNER | 9 | 2x2 | 5x35 | P | \$1.99 | 1-2 | 100 ppi | | ● | | ● | | ● | |
| HIGH-RES VINYL BANNER | 9 | 2x2 | 5x35 | P | \$1.99 | 1-2 | 150 ppi | | | ● | ● | | ● | 2x2 - 4x12 only |
| CANVAS BANNER | 17 | 2x2 | 4x12 | R | \$2.99 | 2-3 | 150 ppi | | | ● | | | ● | |
| SATIN FABRIC BANNER- SS | 16 | 2x2 | 20x150 | R | \$2.99 | 7-8 | 100 ppi | | | ● | | ● | ● | ● |
| SATIN FABRIC BANNER- DS | 16 | 2x2 | 20x150 | R | \$6.25 | 7-8 | 100 ppi | | | ● | | ● | ● | ● |
| MATTE FABRIC BANNER- SS | 16 | 2x2 | 20x150 | R | \$2.99 | 7-8 | 100 ppi | | | ● | | ● | ● | ● |
| MATTE FABRIC BANNER- DS | 16 | 2x2 | 20x150 | R | \$6.25 | 7-8 | 100 ppi | | | ● | | ● | ● | ● |
| XL 13 OZ VINYL BANNER | 13 | 6x6 | 50x150 | S | \$2.19 | 4-5 | 100 ppi | ● | | | ● | | ● | ● |
| XL 18 OZ VINYL BANNER | 13 | 5x5 | 50x150 | U | \$3.95 | 4-5 | 100 ppi | | ● | | ● | | ● | ● |
| XL MESH VINYL BANNER | 12 | 6x6 | 16x150 | S | \$1.99 | 4-5 | 100 ppi | | ● | | ● | | ● | ● |
| DS 18 OZ BANNER | 14 | 2x2 | 10x150 | S | \$4.99 | 4-5 | 100 ppi | | ● | | ● | | ● | ● |

RETRACTABLE BANNER KITS



ABOUT ALL OUR RETRACTABLE KITS

Indoor or outdoor, large or small, economy-priced or ultra-durable professional-grade, we have the perfect retractable banner! From small tabletop or counter-top displays to strong wind-resistant sidewalk displays, we offer the best retractable banner for any need. These economical, eye-catching, and portable banner kits are a great way to grab attention.

All retractable stands feature a spring-loaded base that stores the banner inside the base housing when not in use. Simply pull the banner out of the base and attach the top rail to the included pole set to display your banner.

- » Every kit includes a custom banner (two banners if double-sided), stand hardware, and carrying case
- » Printed on 15 oz white PET with blockout layer and white backing; non-curling and scratch-resistant
- » CMYK full-color digital print with UV-resistant inks
- » Easily portable stands are a great solution for presentations on-the-go
- » Kits arrive preloaded and ready for quick setup
- » Replacement banners are available only for Telescoping Pro; all other models come with the banner permanently attached to the stand.

ARTWORK SPECIFICATIONS

Print: Digital Full Color - CMYK - UV-Resistant Inks

Resolution: 100-150 DPI at Full Scale Recommended

6 FEET



ECONOMY RETRACTABLE
33" w x 78" h



ECONOMY RETRACTABLE
24" w x 78" h



TELESCOPING PRO RETRACTABLE
33" w x 36" h to 86" h (adjustable)



TABLE TOP RETRACTABLE
22" w x 24" h or 35.5" h



DOUBLE-SIDED INDOOR
RETRACTABLE
33.5" w x 78" h



DOUBLE-SIDED OUTDOOR
RETRACTABLE
31" w x 78" h



ECONOMY RETRACTABLE

Our most popular retractable banner kit. Printed in beautiful full color on our 15 oz PET material with blockout layer for 100% opacity. The material is attached to the base's spring-loaded retractor mechanism which holds your banner securely inside the hardware. Simply insert the support pole into the back of the base then pull the banner out of the housing and attach the hook to the top of the support pole, and your display is ready. Recommended for short-term applications; works best for customers who do not need to change graphics (banners arrive permanently attached to the stands).

BANNER & STAND SPECIFICATIONS

Economy Retractable - 24" x 78" Info:

Visible Area: 23.75"w x 78"h
 Print Size: 23.75"w x 83.75"h
 Display Footprint: 24"w x 84"h x 15"d
 Kit Weight: 6 lbs

Economy Retractable - 33" x 78" Info:

Visible Area: 33"w x 78"h
 Print Size: 33"w x 83.75"h
 Display Footprint: 34.5"w x 84"h x 15"d
 Kit Weight: 7.25 lbs

SIZES & PRICING {Q} *[Each Kit]*

| SIZE | QTY 1-9 | QTY 10-24 | QTY 25-49 | QTY 50-99 | QTY 100+ |
|-----------------------------|----------|-----------|-----------|-----------|----------|
| 24"w x 78"h | \$143.63 | \$139.08 | \$134.54 | \$129.99 | \$125.45 |
| 24"w x 78"h (hardware only) | \$89.09 | \$84.54 | \$80.00 | \$75.45 | \$70.91 |
| 33"w x 78"h | \$161.81 | \$157.27 | \$152.72 | \$148.18 | \$143.63 |
| 33"w x 78"h (hardware only) | \$107.27 | \$102.72 | \$98.18 | \$93.63 | \$89.09 |



{ 1-YEAR
HARDWARE
WARRANTY }

{ ★ ⚙ ⚙ ⚙ ⚙ ⚙ }

TELESCOPING PRO RETRACTABLE

The most versatile retractable banner kit we sell, perfect for professionals who need a long-lasting display that allows easy graphic changes. Your banner is held fast by a snap-rail system allowing you to remove and replace your banners as often as needed. Setup is easy: simply insert the support pole into the back of the base and hook the banner rail to the top of the support pole. Hardware includes one-year warranty!



- » Printed in full color on white 15 oz PET
- » Kit includes banner, retractable stand, and carrying case
- » Twist-locking pole provides an adjustable display height of 36" to 86"
- » Easy setup: insert the support pole into the base and turn clockwise until secure, set the pole height using the twist lock, then attach the sign rail to the top of the pole
- » Spring tension is adjustable, allowing you to reduce tension during storage and increase tension when the stand is in use
- » Wide foldout base for extra stability
- » Most orders ship 1-2 days after proof approval
- » Includes one-year hardware warranty
- » Replacement banners now available online

SIZES & PRICING {T} {Each Kit}

| SIZE | QTY 1-9 | QTY 10-24 | QTY 25-49 | QTY 50-99 | QTY 100+ |
|-------------------------------------|----------|-----------|-----------|-----------|----------|
| 33.5"w x 86"h | \$305.81 | \$298.66 | \$291.52 | \$284.37 | \$277.23 |
| 33.5"w x 86"h - Replacement Graphic | \$98.60 | \$93.24 | \$90.74 | \$88.24 | \$85.74 |
| 33.5"w x 72"h | \$295.80 | \$289.73 | \$283.66 | \$277.58 | \$271.51 |
| 33.5"w x 72"h - Replacement Graphic | \$83.60 | \$80.74 | \$78.60 | \$76.45 | \$74.31 |
| 33.5"w x 60"h | \$287.23 | \$282.23 | \$277.23 | \$272.22 | \$267.94 |
| 33.5"w x 60"h - Replacement Graphic | \$70.74 | \$68.23 | \$66.45 | \$64.66 | \$62.88 |



BANNER & STAND SPECIFICATIONS:

Maximum Stand Size:

Visible Area: 33.5"w x 86"h

Print Size: 33.5"w x 92"h

{6" bottom bleed}

Display Footprint:

35.25"w x 90"h x 10"d

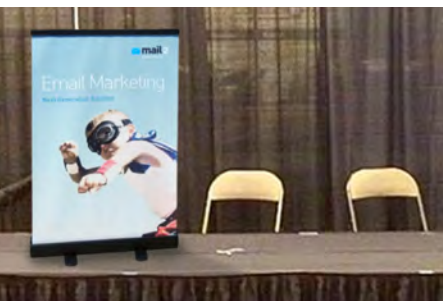
Other Custom Size Info:

Visible Area: 33.5" wide banner
has an adjustable height
of 36" up to 86"

Print Size: 33.5"w and add
additional 6" for bottom bleed

Total Stand Height: Variable
depending on chosen size;
stand adds 4" to total height

Kit Weight: 18 lbs



TABLETOP RETRACTABLE

Great for trade shows and point-of-purchase advertising. Ideal for customers who do not need to frequently change their graphic, this stand comes preloaded for an immediate professional display guaranteed to grab your customers' attention.

- » Printed on 15 oz white PET with white backing
- » Display is 24" wide with a height of either 22" or 35.5"
- » Banner graphic comes permanently attached to stand
- » Setup is easy - simply insert the three-piece pole set into the base, pull the banner out by the snap rail, and hook the rail to the top of the pole
- » Stabilizing feet at base of stand swivel underneath for easy storage
- » Most orders ship 1-2 business days after proof approval

BANNER & STAND SPECIFICATIONS:

24" x 22" Info:

Visible Area: 24"w x 22.75"h
 Print Size: 24"w x 28"h
 Display Footprint: 24.5"w x 27.25"h x 11"d

24" x 35.5" Info:

Visible Area: 24"w x 35.5"h
 Print Size: 24"w x 41.5"h
 Display Footprint: 24.5"w x 39.25"h x 11"d
 Kit Weight: 6 lbs



SIZES & PRICING {T} (Each Kit)

| SIZE | QTY 1-9 | QTY 10-24 | QTY 25-49 | QTY 50-99 | QTY 100+ |
|---------------|---------|-----------|-----------|-----------|----------|
| 24"w x 22"h | \$92.89 | \$90.03 | \$87.17 | \$84.31 | \$81.45 |
| 24"w x 35.5"h | \$98.60 | \$95.74 | \$92.89 | \$90.03 | \$87.17 |



DELUXE MINI RETRACTABLE

The perfect point-of-purchase display. With a graphic area of 8.25"w x 16"h, this is our smallest display kit, perfect for countertops in retail stores, restaurants, and automotive centers.

- » Printed on 15 oz white PET with white backing
- » Display area 8.25"w x 16"h
- » Stand is made of light-weight aluminium
- » Banner display comes permanently attached to stand
- » Most orders ship 1-2 days after proof approval

SIZES & PRICING {T} *(Each Kit)*

| SIZE | QTY 1-9 | QTY 10-24 | QTY 25-49 | QTY 50-99 | QTY 100+ |
|---------------|---------|-----------|-----------|-----------|----------|
| 8.25"w x 16"h | \$60.02 | \$57.87 | \$55.73 | \$53.59 | \$51.44 |

BANNER & STAND SPECIFICATIONS

Banner Visible Area: 8.25"w x 16"h
 Banner Print Size: 8.25"w x 20.5"h
 Display Footprint: 9.375"w x 17.75"h x 4"d
 Kit Weight: 1.5 lbs





DOUBLE-SIDED INDOOR RETRACTABLE

Maximize your advertising dollar with a durable double-sided retractable display. A perfect way to promote your message in areas with two-way traffic. Ruggedly built for maximum longevity.

- » Kit includes two banners preloaded into a retractable stand and carrying case; some assembly required
- » Built ruggedly for longevity with a sleek design for a professional look
- » Stand holds two 33.5" wide by 78" tall banners.
- » Recommended for indoor use only
- » Most orders ship 1-2 business days after proof approval

SIZES & PRICING {U} *(Each Kit)*

| SIZE | QTY 1-9 | QTY 10-24 | QTY 25-49 | QTY 50-99 | QTY 100+ |
|---------------|----------|-----------|-----------|-----------|----------|
| 33.5"w x 78"h | \$278.66 | \$271.99 | \$265.33 | \$258.66 | \$251.99 |

BANNER & STAND SPECIFICATIONS:

(Double-sided stand displays 2 banner graphics)

Banner Visible Area: 33.5"w x 78"h

Banner Print Size: 33.5"w x 83.75"h

Display Footprint: 36"w x 3.25"h x 9.25"d

Kit Weight: 19 lbs





DOUBLE-SIDED OUTDOOR RETRACTABLE

The largest of our retractable banner units, this retractable banner kit is an attention-commanding display. Preadloaded with two single-sided banners, this combo stand is recommended for outdoor use and has a hollow plastic base that can be filled with 14.75 gallons of water or sand for ballast against wind. A great way to advertise your message in areas with two-way traffic.

- » Printed in full color on 15 oz white PET with blockout layer and white backing
- » Support poles adjust to 3 preset heights - 78.75", 71", and 62"
- » The plastic base can hold up to 14.75 gallons of sand or water
- » Two graphics are housed separately within the base and pull out to attach to the support bars at the top of the stand
- » Excels in outdoor storefront applications
- » Most orders ship 1-2 business days after proof approval

SIZES & PRICING {U} (Each Kit)

| SIZE | QTY 1-9 | QTY 10-24 | QTY 25-49 | QTY 50-99 | QTY 100+ |
|---------------|----------|-----------|-----------|-----------|----------|
| 31" w x 78" h | \$398.66 | \$391.99 | \$385.32 | \$378.66 | \$371.99 |

BANNER & STAND SPECIFICATIONS:

31" x 78.75" Info:

Visible Area: 31" w x 78.75" h

Print Size: 31" w x 86" h

Display Footprint: 44" w x 87" h x 24" d

Kit Weight: 42.5 lbs



SIGNS

Generate impulse sales and put your marketing message in front of your customers by utilizing our eye-catching signs! Our Vinyl Posters, Adhesive Floor and Wall Signs, Coroplast Signs, Car Magnets, and Gallery Canvas Prints are all made with the highest-quality material and printed with impressively vivid colors in UV-resistant inks. These displays grab attention and drive business your way.

- » Foam Board, Sintra, and Paperboard Standee signs are still available by request; please call for more information
- » Custom sizes of Coroplast, Adhesive Window Signs, and Adhesive Accents by Jennifer Taylor are also available by request; please call for a custom quote
- » To find pricing for custom sizes of all other signs, please round up to the next larger standard size



VINYL POSTERS



ADHESIVE SIGNS



VEHICLE MAGNET



YARD SIGN





COROPLAST YARD SIGN

Inexpensive and lightweight Coroplast Signs are weatherproof and keep your message looking great for months. Constructed with fluted plastic, these signs are approved for indoor-or-outdoor applications and are offered in a variety of sizes to fit your needs.

The sturdy, yet portable material makes these signs easy to transport and store for repeated use.

- » Digitally printed in full color with UV-resistant inks on ridged 4-mm coroplast - {corrugated}
- » Available single or double-sided in a variety of sizes
- » Versatile for indoor-or-outdoor use
- » Most orders ship 4-5 business days after proof approval
- » Optional H-stakes available for easy ground installation
- » Fluting is vertical by default so signs can be used with ground stakes

ARTWORK SPECIFICATIONS

Print: Digital Full Color - CMYK - UV- Resistant Inks
Resolution: 100-150 DPI at Full Scale Recommended

Single-sided signs are full bleed items, but please note that all double-sided coroplast signs will have a 1/2" to 1" white border. The images on each side will line up within 1/4".



24"H x 10"W
WIRE H-STAKES ARE
ALSO AVAILABLE FOR
\$1.27 (U) EACH



SIZES & PRICING* {V} [each]

| SIZE | SIDES | QTY 1-4 | QTY 5-9 | QTY 10-24 | QTY 25-49 | QTY 50-99 | QTY 100-249 | QTY 250-499 | QTY 500+ |
|---------|--------|----------|----------|-----------|-----------|-----------|-------------|-------------|----------|
| 12"x18" | Single | \$17.50 | \$9.69 | \$7.81 | \$5.94 | \$3.88 | \$2.75 | \$2.13 | \$1.69 |
| | Double | \$22.50 | \$13.75 | \$10.31 | \$5.94 | \$4.13 | \$3.56 | \$3.25 | \$2.81 |
| 18"x24" | Single | \$28.44 | \$12.50 | \$10.31 | \$7.81 | \$5.56 | \$4.44 | \$3.75 | \$3.31 |
| | Double | \$35.63 | \$15.31 | \$11.88 | \$9.25 | \$7.13 | \$5.19 | \$4.50 | \$4.13 |
| 24"x24" | Single | \$56.88 | \$17.50 | \$14.06 | \$11.25 | \$8.94 | \$6.00 | \$5.38 | \$4.94 |
| | Double | \$75.94 | \$28.13 | \$22.19 | \$16.06 | \$13.75 | \$11.63 | \$9.88 | \$8.25 |
| 24"x32" | Single | \$63.75 | \$21.88 | \$18.13 | \$15.94 | \$13.75 | \$10.81 | \$9.06 | \$7.38 |
| | Double | \$82.50 | \$38.44 | \$30.31 | \$24.13 | \$20.00 | \$16.63 | \$14.81 | \$11.50 |
| 24"x48" | Single | \$82.50 | \$34.69 | \$28.44 | \$24.06 | \$21.56 | \$16.56 | \$13.13 | \$9.88 |
| | Double | \$93.75 | \$46.25 | \$39.38 | \$32.75 | \$26.63 | \$23.00 | \$18.06 | \$15.63 |
| 36"x48" | Single | \$86.88 | \$46.25 | \$39.38 | \$30.94 | \$26.56 | \$21.25 | \$18.13 | \$16.44 |
| | Double | \$104.06 | \$62.50 | \$51.56 | \$41.63 | \$33.31 | \$27.94 | \$24.69 | \$22.19 |
| 48"x48" | Single | \$93.75 | \$46.25 | \$39.38 | \$30.94 | \$26.56 | \$21.25 | \$19.69 | \$18.06 |
| | Double | \$110.00 | \$62.50 | \$56.88 | \$46.63 | \$39.44 | \$32.88 | \$27.94 | \$26.31 |
| 48"x96" | Single | \$130.00 | \$64.06 | \$55.31 | \$46.56 | \$40.94 | \$38.44 | \$36.19 | \$32.88 |
| | Double | \$182.50 | \$113.75 | \$103.13 | \$95.31 | \$90.31 | \$82.19 | \$65.63 | \$57.50 |

* Due to their size, 48"x96" Corrugated Signs will arrive with a slit on one side down the center for standard shipping purposes. To ship without center slice please contact us for shipping freight costs.

** Custom sizes are available for orders of 25+. Please call for a quote.





VEHICLE MAGNET

We are pleased to announce our new line of Vehicle Magnets! Magnetics will provide a super simple way to get your message across, while also providing the option of transfer another vehicle or metal surface. Made of sturdy yet flexible .030 mil magnetic substrate so they're tough enough for all-weather road, but with print quality pretty enough to bring indoors. This custom magnetic sheeting lays flat and adheres to metal surfaces for a semi-permanent bond that stays where you want but comes off when you like. Ideal for mobile advertisement and identification. Just wash-and-dry magnetic backing before application on a clean dry metal surface.

- » Most orders ship 5-6 days after proof approval
- » Available in 12"x18", 12"x24", 18"x24", and 24"x36" sizes
- » Minimum quantity of two signs per design
- » Available with matte lamination for an additional charge of \$1.38 [V] per square foot

ARTWORK SPECIFICATIONS

Print: Digital Full Color - CMYK - UV-Resistant Inks

Resolution: 100 DPI at Full Scale **Recommended**



PRICING {R} *[each]*

| SIZE | QTY 2-3 | QTY 4-7 | QTY 8-11 | QTY 12-23 | QTY 24-49 | QTY 50-99 | QTY 100+ |
|---------|---------|---------|----------|-----------|-----------|-----------|----------|
| 12"x18" | \$25.00 | \$20.00 | \$18.33 | \$17.50 | \$15.00 | \$14.17 | \$13.33 |
| 12"x24" | \$30.00 | \$25.00 | \$23.33 | \$20.83 | \$19.58 | \$18.75 | \$17.92 |
| 18"x24" | \$40.00 | \$36.67 | \$31.25 | \$29.58 | \$28.33 | \$27.50 | \$26.67 |
| 24"x36" | \$72.50 | \$63.33 | \$58.33 | \$56.25 | \$55.42 | \$54.58 | \$53.33 |



EZ DOT ADHESIVE VINYL

EZ Dot Adhesive is one of the easiest ways to present your advertising message. The back of your EZ Dot Adhesive banner features raised adhesive dots that allow air to escape during product application to any smooth surface, preventing the material from wrinkling or bubbling. Available single-sided only, EZ Dot goes up easily on any surface. This matte-finished, white-backed adhesive product removes from most surfaces without trace of residue. Designed for short-term indoor applications, EZ Dot can be applied to any dry, clean surface, and can even be used as a short-term vehicle graphic. When you are in need of a repositionable adhesive material that is easily applied by hand with practically no bubbles, this is the product for you.

- » Recommended for indoor use with a maximum outdoor life of 2-3 months
- » Most orders ship 1-2 business days after proof approval

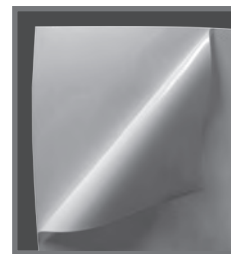
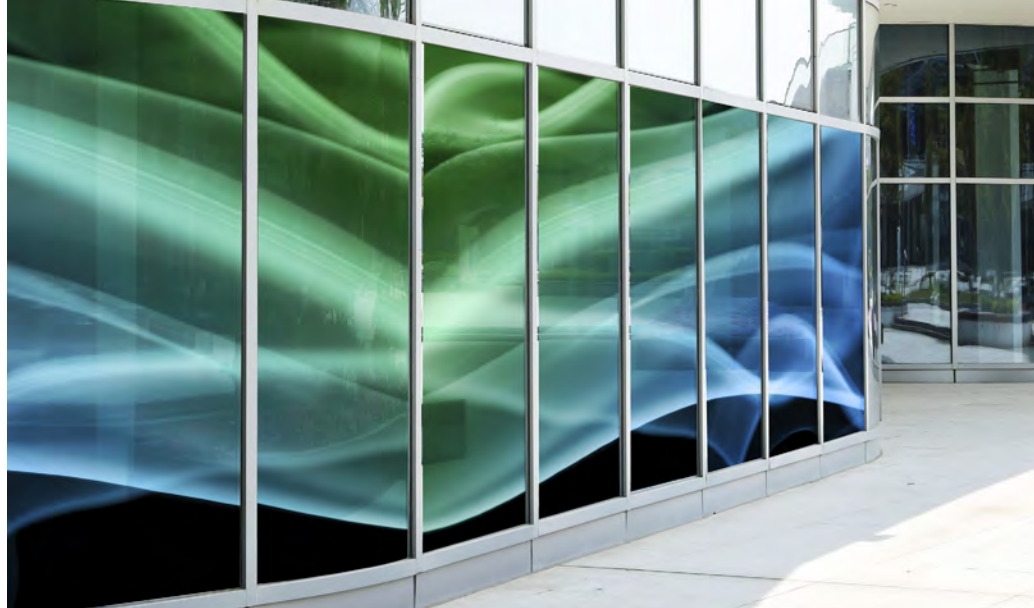
ARTWORK SPECIFICATIONS

Print: Digital Full Color - CMYK - UV-Resistant Inks

Resolution: 150 DPI at Full Scale **Recommended**

PRICING {P}

| 1 TO 100 SQ FT | 101 TO 250 SQ FT | 251 TO 500 SQ FT | 501 TO 1000 SQ FT | 1001 + SQ FT |
|-----------------|------------------|------------------|-------------------|----------------|
| \$4.98 /sq. ft. | \$4.78 /sq. ft. | \$4.58 /sq. ft. | \$4.38 /sq. ft. | Call for quote |



SIZING

Maximum height: 4 feet
Maximum width: 12 feet



SMOOTH ADHESIVE FILM

Smooth Adhesive Film is a great-looking, satin-finished, repositionable adhesive with white backing. This 7 mil adhesive is single-sided only, designed for use on most non-porous surfaces and is great for glass as it leaves no residue. While it works great as a window graphic, it also shines as a wall graphic or for temporary use on vehicles. This premium display film is super-easy to apply with repositionable adhesive and is produced with a textured liner to ensure air release during application, which eliminates bubbles and wrinkles. It is also an ecologically friendly alternative to PVC and is tear-resistant. Application surface must be smooth, clean, dry, and have no bumps or defects. Painted surfaces must be allowed to cure for four weeks prior to installation. This premium display film is the perfect product for short-term outdoor use or for high-class indoor events.



SIZING

Maximum height: 4 feet
Maximum width: 12 feet

- » Recommended for indoor use only
- » Most orders ship 1-2 business days after proof approval

ARTWORK SPECIFICATIONS

Print: Digital Full Color - CMYK - UV-Resistant Inks

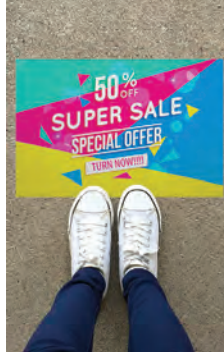
Resolution: 150 DPI at Full Scale **Recommended**

PRICING {P}

| 1 TO 100 SQ FT | 101 TO 250 SQ FT | 251 TO 500 SQ FT | 501 TO 1000 SQ FT | 1001+ SQ FT |
|-----------------|------------------|------------------|-------------------|----------------|
| \$5.62 /sq. ft. | \$5.44 /sq. ft. | \$5.25 /sq. ft. | \$5.07 /sq. ft. | Call for quote |



ADHESIVE NON-SLIP FLOOR SIGN



ADHESIVE NON-SLIP FLOOR SIGN

Our Adhesive Non-Slip Floor Signs can stick to ANY wall or floor surface - walls, sidewalks, brick, tile, doors, carpet, wood, metal, glass, painted surface, stone, cement, and asphalt! With its OSHA approved slip-resistant surface, these adhesive signs are a great way to reach customers as they shop, to promote or decorate for a special event, to create or reinforce brand identity on storefronts, and even to direct traffic in parking lots and drive-thrus. This material's unique texture adds extra depth to an interior wall, but also has the durability to promote your advertisement on an outdoor brick wall or exterior window.

- » Printed on 8-mil slip-resistant textured vinyl {textile reinforced}
- » Sticks to any clean, dry surface
- » Wraps and bends with corners and uneven or ridged surfaces
- » Slip-resistant surface with no laminate - OSHA, ASTM D-2047, and R12 certified
- » Removes cleanly with little or no residue
- » During installation surface must be clean and dry - roller application recommended
- » Lifetime of these signs depends on usage. Indoor wall, window, and no-traffic floor applications last up to 2-3 years. Outdoor and high-traffic floor applications last up to 3 months
- » Most orders ship 1-2 business days after proof approval

ARTWORK SPECIFICATIONS

Print: Digital Full Color - CMYK - UV-Resistant Inks

Resolution: Minimum 150 DPI at Full Scale Recommended



SIZING

Maximum height: 3 feet

Maximum width: 12 feet

PRICING {P}

| 1 TO 100 SQ FT | 101 TO 250 SQ FT | 251 TO 500 SQ FT | 501 TO 1000 SQ FT | 5001+ SQ FT |
|-----------------|------------------|------------------|-------------------|----------------|
| \$6.98 /sq. ft. | \$6.78 /sq. ft. | \$6.58 /sq. ft. | \$6.38 /sq. ft. | Call for quote |



WINDOW SIGNS

**MINIMUM ORDER OF
\$45.00 FOR WINDOW SIGNS**



ADHESIVE WINDOW SIGN

Take advantage of your window space with our new Adhesive Window Signs. Available single-sided or double-sided, these signs are printed on smooth vinyl with an interior blackout layer for 100% opacity. Simply peel and stick to your window for an instant professional display.

- » Printed in full color on 10 mil smooth vinyl with internal blackout layer, recommended for indoor use
- » Best when used on glass, but will adhere to almost any surface
- » Available with gloss or matte lamination for an additional charge of \$1.38 {V} per square foot
- » Clear, low tack, repositionable adhesive applied to either side you choose.
- » Can be printed with different images on each side for separate coming-and-going messages

- » Wrinkle-free material uses air release technology making it easy to apply without annoying air pockets
- » Can be removed and repositioned if the adhesive surface is kept clean
- » Choose your own custom size from 4"x4" to 48"x60"
- » \$75 {R} minimum per design + \$10 {P} setup fee per design
- » Most orders print 5-6 business days after proof approval

SIZES & PRICING {T}

| TOTAL SQ FT | SINGLE SIDED | DOUBLE SIDED |
|---------------|-----------------|-----------------|
| 0 to 11.99 | \$6.07 /sq. ft. | \$8.22 /sq. ft. |
| 12 to 24.99 | \$5.72 /sq. ft. | \$7.86 /sq. ft. |
| 25 to 49.99 | \$5.36 /sq. ft. | \$7.50 /sq. ft. |
| 50 to 99.99 | \$5.00 /sq. ft. | \$7.15 /sq. ft. |
| 100 to 249.99 | \$4.64 /sq. ft. | \$6.79 /sq. ft. |
| 250 to 499.99 | \$4.29 /sq. ft. | \$6.43 /sq. ft. |
| 500 to 999.99 | \$4.07 /sq. ft. | \$6.07 /sq. ft. |
| 1000+ | Call for Quote | Call for Quote |

ARTWORK SPECIFICATIONS

Print: Digital Full Color - CMYK -
UV-Resistant Inks
Resolution: 100-150 DPI
at Full Scale Recommended

SIZING

Maximum height: 4 feet
Maximum width: 5 feet



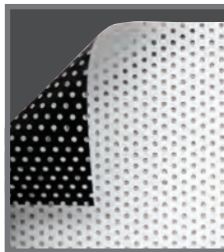
* Priced by total square footage of identical items: {H" x W" x Quantity}/144



PERFORATED WINDOW SIGN

Perfect for promoting your business using your valuable window space. This material's unique "one-way viewing" properties allow you to see out your windows from the inside but it appears as a solid display from the outside.

- » Printed on 6 mil perforated white vinyl film with black backing
- » 80/20 perforation; 80% printed space, 20% empty space
- » Great for offices; provides shading similar to window tinting
- » Easy to hang – simply peel and stick using the small transparent adhesive strips around the perimeter of the sign
- » Adhesive is repositionable up to 2 or 3 times if kept clean
- » Display multiple pieces together to create one large sign
- » Applied to inside of window; not recommended for exterior use or on automobile windows
- » Most orders ship 1-2 business days after proof approval



SIZING

Maximum height: 4 feet
Maximum width: 12 feet

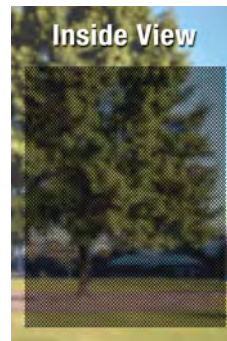
ARTWORK SPECIFICATIONS

Print: Digital Full Color - CMYK - UV-Resistant Inks

Resolution: 100-150 DPI at Full Scale Recommended

PRICING {R}

| 1 TO 100 SQ FT | 101 TO 250 SQ FT | 251 TO 500 SQ FT | 501 TO 1000 SQ FT | 1001+ SQ FT |
|-----------------|------------------|------------------|-------------------|----------------|
| \$6.98 /sq. ft. | \$6.82 /sq. ft. | \$6.65 /sq. ft. | \$6.48 /sq. ft. | Call for quote |



80/20 PERFORATED
NON-ADHESIVE
WHITE VINYL
FILM WITH BLACK
BACKING ALLOWS
"ONE-WAY VIEWING"
FROM THE INSIDE
OUT

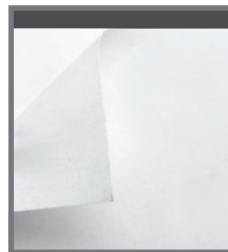
ADHESIVE FLOOR AND WALL SIGNS



ADHESIVE FABRIC WALL SIGN

An elegant wall covering perfect for creating a warm, inviting atmosphere. Printed on a strong 10 oz matte fabric with white adhesive backing, this material adheres to any clean, smooth surface.

- » Premium 10 oz opaque matte fabric with white adhesive backing
- » Able to be repositioned multiple times during installation without leaving a residue as long as adhesive is kept clean
- » Resists ripping, wrinkling, shrinking, and curling
- » Adheres to walls, windows, metal, and almost any smooth surface
- » Recommended for indoor use in a dry location (ink can smear when wet)
- » Most orders ship 1-2 business days after proof approval
- » If used on painted walls, we recommend a good coat of primer to help prevent paint removal when the sign is taken down



SIZING

Maximum width: 4 feet
Maximum length: 12 feet

ARTWORK SPECIFICATIONS

Print: Digital Full Color - CMYK - UV-Resistant Inks

Resolution: 150 DPI at Full Scale Recommended

PRICING {R}

| 1 TO 100 SQ FT | 101 TO 250 SQ FT | 251 TO 500 SQ FT | 501 TO 1000 SQ FT | 1001+ SQ FT |
|-----------------|------------------|------------------|-------------------|----------------|
| \$5.32 /sq. ft. | \$5.15 /sq. ft. | \$4.98 /sq. ft. | \$4.65 /sq. ft. | Call for quote |



ADHESIVE ACCENTS BY JENNIFER TAYLOR



ADHESIVE ACCENTS BY JENNIFER TAYLOR

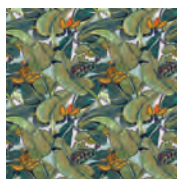
This is not your grandparents' wallpaper! While many of you may be familiar with Jennifer Joan Taylor's work as an actress (she has played roles on the hit TV shows Empire and Prison Break), you may not know about her line of digitally created step-&-repeat adhesives. Use these decorative adhesives as a colorful accent on stair-risers, fan blades, lamp shades, shelf-liners, as wall art... the applications are limited only by your imagination!

Printed on our Adhesive Fabric Wall Sign material, these removable adhesives function as self-sticking fabric wallpaper and apply easily to any smooth surface. Similar to high-quality contact paper, it has a matte, velvety feel, and can be used as a temporary fix (great if you rent) or finished with a water-based seal.

A self-taught artist, Taylor describes her style as expressionistic, leaning towards primitive and folk art. Choose from nine original designs:



Alphabet Blue/Alphabet Pink



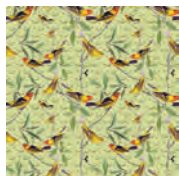
Banana Palm



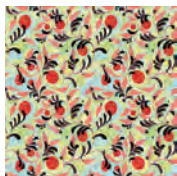
Butterfly



Cabin in the Woods



Canary Yellow



Ginger Spice



Magnolia



Morocco Red



PRICING {S} *[each]*

| SIZE | QTY 1-4 | QTY 5-9 | QTY 10-24 | QTY 25-49 | QTY 50-99 | QTY 100+ |
|-------|----------|---------|-----------|-----------|-----------|----------|
| 1'x1' | \$6.69 | \$6.54 | \$6.38 | \$6.23 | \$6.08 | \$5.92 |
| 1'x2' | \$12.77 | \$12.61 | \$12.46 | \$12.30 | \$12.15 | \$12.00 |
| 1'x3' | \$19.23 | \$18.84 | \$18.46 | \$18.07 | \$17.69 | \$17.30 |
| 1'x4' | \$25.38 | \$24.92 | \$24.45 | \$23.99 | \$23.53 | \$23.07 |
| 1'x5' | \$31.91 | \$31.14 | \$30.38 | \$29.61 | \$28.84 | \$28.07 |
| 1'x6' | \$38.30 | \$37.37 | \$36.45 | \$35.53 | \$34.61 | \$33.68 |
| 1'x7' | \$44.68 | \$43.60 | \$42.53 | \$41.45 | \$40.37 | \$39.30 |
| 1'x8' | \$51.06 | \$49.83 | \$48.60 | \$47.37 | \$46.14 | \$44.91 |
| 2'x2' | \$25.38 | \$24.92 | \$24.45 | \$23.99 | \$23.53 | \$23.07 |
| 2'x3' | \$38.30 | \$37.37 | \$36.45 | \$35.53 | \$34.61 | \$33.68 |
| 2'x4' | \$51.06 | \$49.83 | \$48.60 | \$47.37 | \$46.14 | \$44.91 |
| 2'x5' | \$63.83 | \$60.75 | \$59.21 | \$57.68 | \$56.14 | \$54.60 |
| 2'x6' | \$76.59 | \$72.90 | \$71.06 | \$69.21 | \$67.36 | \$65.52 |
| 2'x7' | \$89.36 | \$85.05 | \$82.90 | \$80.75 | \$78.59 | \$76.44 |
| 2'x8' | \$102.12 | \$97.20 | \$94.74 | \$92.28 | \$89.82 | \$87.36 |

ADHESIVE SIGN USAGE AND REMOVAL



When removing your adhesive sign from a wall, window, or floor, carefully pull diagonally from the corner, back onto itself. This will help ensure an easier and cleaner removal.



Do not pull straight down or to the side when removing your signs, as this may increase the likelihood of damaging the sign or application surface.

| | EZ DOT ADHESIVE VINYL | SMOOTH ADHESIVE VINYL | ADHESIVE WINDOW SIGN | PERFORATED WINDOW SIGN | ADHESIVE FABRIC WALL SIGN | ADHESIVE NON- SLIP FLOOR SIGN |
|--|--------------------------|--------------------------|-------------------------|---------------------------|------------------------------|----------------------------------|
| Repositionable during installation | ● | ● | ● | ● | ● | ● |
| Removes cleanly with little to no residue | ● | ● | ● | ● | ● | ● |
| Adhesive strengthens over time | | | | | ● | |
| Air release feature prevents wrinkles/bubbles | ● | ● | ● | | ● | ● |
| Adheres to porous surfaces (brick, drywall, etc) | | | ● | | | ● |
| Safe on painted surfaces (primed/cured) | ● | ● | ● | | ● | ● |
| Non-slip surface for floor applications | | | | | | ● |
| Lamination available | | | ● | | | |
| Blockout layer for 100% opacity | | | ● | | ● | ● |
| Can be used outdoors | ● | ● | ● | | | ● |
| Available double-sided | | | ● | | | |
| 24-48 hour print turnaround | ● | ● | | ● | ● | ● |
| UV-Resistant ink | ● | ● | ● | ● | ● | ● |
| Full-color, high-resolution print | ● | ● | ● | ● | ● | ● |
| Custom sizes available (inches) | ● | ● | ● | ● | ● | ● |



VINYL POSTER

A superior, less-expensive alternative to paper posters, especially in short runs. Our Vinyl Posters feature beautiful upscale color reproduction with a low-glare finish and are specially engineered to hang flat with no edge curling, even with heavy ink coverage.

Vinyl Posters are waterproof and highly scuff and scratch-resistant, making lamination unnecessary for most applications. This versatile product meets many needs: tape them to a wall or window, staple them to a wooden post, or request grommets in the top corners at no extra charge and hang them in your windows with suction cup hooks. With no minimum quantity required, this product has quickly become a go-to item for many of our customers.

- » Printed on 15 oz white PET with white backing and blackout layer for 100% opacity
- » Waterproof, scratch resistant, and engineered to hang flat without curling
- » Pearl semi-gloss material finish
- » Posters are smooth cut to the edges of your artwork
- » Recommended for indoor use or short-term outdoor displays
- » Most orders ship 1-2 business days after proof approval



SIZING

Maximum height: 4 feet
Maximum width: 20 feet

ARTWORK SPECIFICATIONS

Print: Digital Full Color - CMYK - UV-Resistant Inks

Resolution: 150-200 DPI at Full Scale Recommended

PRICING {R}

| 1 TO 100 SQ FT | 101 TO 250 SQ FT | 251 TO 500 SQ FT | 501 TO 1000 SQ FT | 1001+ SQ FT |
|-----------------|------------------|------------------|-------------------|----------------|
| \$4.48 /sq. ft. | \$4.32 /sq. ft. | \$4.15 /sq. ft. | \$3.98 /sq. ft. | Call for quote |





GALLERY CANVAS PRINTS

Our canvas material is one of the highest quality canvas products on the market. Ideal for photographic and fine art reproductions. Gallery Canvas Prints work great for personalized gifts, decoration for your home, company group photos, event photos, company Christmas gifts, awards, and so much more.

- » Printed on heavyweight, tight-weave 20 mil cotton duck canvas
- » Museum-quality material is rated to last over 75 years
- » Printed full color at highest resolution and color reproduction with UV-resistant inks to ensure vivid colors that will not fade for years
- » Medium gloss finish with acid-free archival quality base coating
- » Your printed image wraps around the side and onto the back, creating a smooth finish
- » With every order, our designers will expertly adjust contrast, saturation, resolution, sharpness... and more
- » Our designers can help you create a collage or a triptych
- » Upon request our designer can add multiple filters to your photo - black and white, sepia, blurred edges, and more (extra charges may apply)
- » We accept photos, custom artwork, graphics and anything else that you would like printed on a high-end canvas
- » Canvas is gallery wrapped around museum 1.5" fir wood stretcher bars
- » Hand crafted, which means real eyes inspecting your image and real hands framing it with care
- » Canvas arrives ready to hang
- » Most orders ship 2-3 days after proof approval



SIZES & PRICING { \$ } [each]

| SIZE | QTY 1-9 | QTY 10-24 | QTY 25-49 | QTY 50-99 | QTY 100+ |
|---------|----------|-----------|-----------|-----------|----------|
| 12"x12" | \$59.98 | \$56.14 | \$52.29 | \$48.45 | \$44.60 |
| 12"x18" | \$75.36 | \$70.36 | \$65.37 | \$60.37 | \$55.37 |
| 12"x24" | \$90.74 | \$84.97 | \$79.21 | \$73.44 | \$67.67 |
| 12"x36" | \$106.12 | \$100.35 | \$94.59 | \$88.82 | \$83.05 |
| 18"x18" | \$83.05 | \$77.67 | \$72.29 | \$66.90 | \$61.52 |
| 18"x24" | \$98.43 | \$92.66 | \$86.90 | \$81.13 | \$75.36 |
| 18"x36" | \$121.50 | \$115.35 | \$109.20 | \$103.05 | \$96.89 |
| 24"x24" | \$109.20 | \$103.43 | \$97.66 | \$91.90 | \$86.13 |
| 24"x36" | \$136.88 | \$129.19 | \$121.50 | \$113.81 | \$106.12 |
| 36"x36" | \$152.26 | \$145.34 | \$138.42 | \$131.50 | \$124.58 |

CANVAS SIZE SPECIFICATIONS

Please add 2.75" bleed to each edge of your artwork for wrapping (5.5" total in each dimension). For example, a 24" x 36" canvas requires artwork to be set up at 29.5" x 41.5"



FABRIC FLAGS & DISPLAYS

Increase your advertising reach with attractive fabric flags, perfect for outdoor and roadside displays!

Four types of flags are available. Deluxe Feather Flags come single-sided or double-sided with premium all-aluminum hardware. Value Rectangle, Tear Drop, and Feather Flags are available single-sided with lightweight aluminum/fiberglass hardware, best suited for short-term applications.

When browsing our flags, don't let the term "Single-Sided" fool you. All of our flags are printed using a unique dye-sublimation process which also saturates the reverse side of the flag, creating a mirrored image with 95% of the color depth of the front side.

All flags are printed in fullcolor (CMYK), UV-resistant inks to ensure vivid colors that prevent fading and grab attention.

ARTWORK SPECIFICATIONS

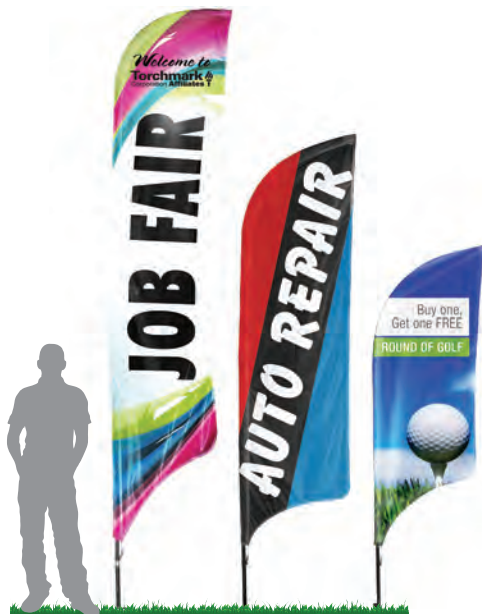
Print: Full-Color Dye-Sublimation with UV-Resistant Inks

Resolution: 100-150 DPI at Full Scale Recommended

Artwork templates can be downloaded from www.bannerfulfillment.com

Note: all fabric flags are recommended for outdoor use in winds less than 30 mph





ALL FEATHER FLAGS COME COMPLETE WITH:

- » One full-color single or double-sided feather flag
- » One 3-piece bungeed pole set with whip
- » One ground stake to be used in soft ground
- » One heavy-duty carrying case, organized with identification pockets
- » 2-year warranty on pole hardware when used exclusively with single-sided flags

*Cross base and water bag available separately.



DELUXE FEATHER FLAG

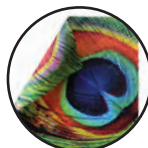
The finest feather flags on the market, ideal for long-term roadside displays. Deluxe Feather Flags feature edge-to-edge dye-sublimation printing and a sturdy aluminum hardware set that comes with a two-year warranty when used exclusively with single-sided flags. Replacement flags are now available online so you can easily and inexpensively change your message as needed. Easy to assemble, and arrives with ground stakes for installation in grassy areas (cross base also available for flat surfaces).

FLAG INFO

- » Full-color, dye-sublimated print on 3.2 oz polyester fabric
- » Vibrant colors with a print that includes the pole sleeve and extends from edge-to-edge
- » Designed to stay open and remain taut even in zero wind conditions
- » Reinforced sleeve pocket prevents tearing
- » Flag is secured to hardware via a clip at the bottom of the pole sleeve
- » Material is recommended for indoor-and-outdoor use in moderate weather conditions
- » When used outdoors, the hardware will outlast the flags; replacement flags are available
- » Most orders ship 7-8 business days after proof approval

POLE SET & GROUND STAKE INFO

- » Hardware consists of a rigid three-piece aluminum pole set, flag whip, and ground stake
- » Flag whip with ball end slides into pole sleeve, designed to prevent tearing and slippage
- » Base of pole set features a steel ball bearing pivot to provide a 360° turning radius
- » Pole hardware is easily secured to the base with a sturdy cotter pin
- » All feather flag kits and hardware come with a ground stake for outdoor installation in grassy areas
- » Optional Cross Bases are available for installations on hard, flat surfaces; Water Bags also available for extra ballast (used with cross bases only) Pole set comes with a two year warranty when used exclusively with single-sided flags



{ 2 YEAR WARRANTY }

SINGLE-SIDED VS. DOUBLE-SIDED

All of our flags are printed using a dye-sublimation process that saturates both sides of the material sheet and results in a 95% saturated mirror image on the reverse side of the fabric.

Single-sided feather flags are constructed out of a single sheet with a mirror image on the reverse side. They are lighter and less expensive, turn more easily with the wind, and place less strain on the hardware than double-sided flags.

Double-sided feather flags are assembled from two sheets of material with a blockout layer sewn between. The front and back images are printed separately from two different pieces of forward-facing artwork (no mirror image bleed-through). Double-sided flags are heavier, do not turn as well in the wind, and place more strain on the hardware than single-sided flags, which is why no warranty is offered for pole sets used with double-sided flags.



Single-Sided
Features one print with a mirrored image saturated onto the backside

Double-Sided
Features two prints sewn back-to-back with a blockout layer between



SIZES & PRICING {T} *[each]*

| SIZE | SIDES | QTY 1-10 | QTY 11-25 | QTY 26-50 | QTY 51-100 | QTY 101 + |
|-------------------------------|--------|----------|-----------|-----------|------------|-----------|
| Medium - 9' Kit | Single | \$231.50 | \$222.92 | \$215.78 | \$207.21 | \$187.20 |
| | Double | \$284.37 | \$277.23 | \$265.79 | \$257.22 | \$245.79 |
| Medium - 9' Flag Replacement | Single | \$117.18 | \$112.89 | \$109.32 | \$105.03 | \$95.03 |
| | Double | \$170.05 | \$167.19 | \$159.33 | \$155.05 | \$153.62 |
| Large - 12' Kit | Single | \$251.50 | \$242.93 | \$234.36 | \$225.78 | \$205.78 |
| | Double | \$304.38 | \$297.23 | \$284.37 | \$275.80 | \$264.37 |
| Large - 12' Flag Replacement | Single | \$127.18 | \$122.89 | \$118.61 | \$114.32 | \$104.32 |
| | Double | \$180.05 | \$177.20 | \$168.62 | \$164.34 | \$162.91 |
| XLarge - 15' Kit | Single | \$270.08 | \$261.51 | \$251.50 | \$242.93 | \$222.92 |
| | Double | \$324.38 | \$315.81 | \$302.95 | \$294.37 | \$282.94 |
| XLarge - 15' Flag Replacement | Single | \$136.47 | \$132.18 | \$127.18 | \$122.89 | \$112.89 |
| | Double | \$190.77 | \$186.48 | \$178.63 | \$174.34 | \$172.91 |

FEATHER FLAG DIMENSIONS

Medium {9ft}

33.5" w x 91" h, flies 9 feet off the ground
Kit Weight: 12 lbs

Large {12ft}

34.4" w x 125" h, flies 12 feet off the ground
Kit Weight: 12 lbs

XLarge {15ft}

34.7" w x 160.7" h, flies 15 feet off the ground
Kit Weight: 13 lbs



NEW VALUE FLAGS!

Our Value Flags are an attractive and inexpensive option for your outdoor display needs. Improved pole and flag structure creates tension so the flag will remain unfurled for continuous graphic exposure. Featuring the same high-quality 3.2 oz polyester flag material as our Deluxe flags, but with new lightweight fiberglass hardware suitable for temporary display. These flags easily attach to an in-ground stake or cross-base for a full 360-degrees of rotation. Available in Rectangle, Tear Drop, and Feather Flag shapes.

VALUE FLAG GRAPHIC INFO:

- » Printed edge-to-edge using full-color dye-sublimation on 3.2 oz polyester fabric
- » Designed to stay open even in zero-wind conditions
- » Reinforced pole sleeve prevents tearing
- » Recommended for indoor-or-outdoor use in mild to moderate weather conditions

VALUE FLAG POLE SET & GROUND STAKE INFO:

- » Hardware consists of pole set and ground stake; cross bases also available for installation on hard, flat surfaces
- » Flexible, but sturdy, flag whip is included with Tear Drop and Feather Flag kits
- » Flag is secured to the hardware using an elastic band that slips over the hardware anchor
- » Hardware is made of a fiberglass/aluminum composite, recommended for use in short-term/low-stress environments



95% INK SATURATION
ENSURES A VIBRANT
MIRRORED IMAGE
ONTO THE
BACKSIDE OF FLAG





VALUE RECTANGLE FLAG

Our Value Rectangle Flags are a great indoor and outdoor advertising solution! Available single-sided only in 9 ft, 12 ft, and 15 ft sizes, the state-of-the-art dye-sublimation technology results in a water-resistant flag.

ECONOMY RECTANGLE FLAGS INCLUDE:

- » One full-color, single-sided, rectangle flag with edge-to-edge print
- » One pole set
- » One ground stake for installation in grassy areas
- » Cross base, water bag, and carrying case available separately
- » Most orders ship 7-8 business days after proof approval

**Please note that flags need to be placed indoors if winds exceed 30 mph*

SIZES & PRICING {T} *[each]*

| SIZE | QTY 1-10 | QTY 11-25 | QTY 26-50 | QTY 51-100 | QTY 101 + |
|----------------------|----------|-----------|-----------|------------|-----------|
| 9' Kit | \$198.63 | \$191.49 | \$185.77 | \$175.77 | \$157.19 |
| 9' Flag Replacement | \$117.18 | \$112.89 | \$109.32 | \$105.03 | \$95.03 |
| 12' Kit | \$220.07 | \$211.49 | \$204.35 | \$194.34 | \$177.20 |
| 12' Flag Replacement | \$127.18 | \$122.89 | \$118.61 | \$114.32 | \$104.32 |
| 15' Kit | \$241.50 | \$232.93 | \$224.35 | \$214.35 | \$197.20 |
| 15' Flag Replacement | \$137.18 | \$132.90 | \$127.90 | \$123.61 | \$113.61 |



VALUE TEAR DROP FLAGS

Our Value Tear Drop Flags are perfect for use in parking lots, grassy areas, rooftops, intersections, showrooms, and trade shows! The edge-to-edge dye-sublimation print is available in solid colors, or customize with your own unique graphics. Available in 8 ft, 11 ft, and 14 ft sizes.

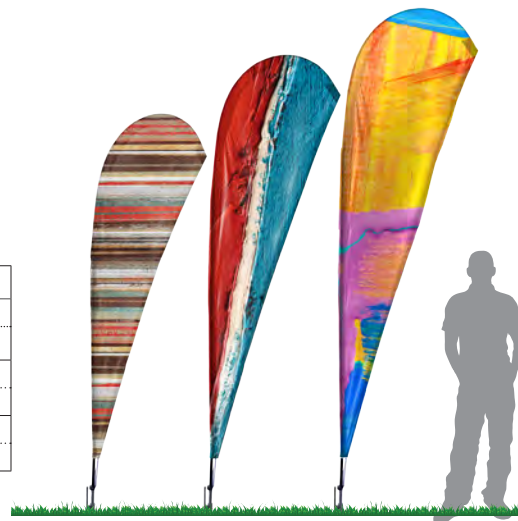
ECONOMY TEAR DROP FLAGS INCLUDE:

- » One full-color, single-sided, rectangle flag with edge-to-edge print
- » One pole set with flag whip
- » One ground stake for installation in grassy areas
- » Cross base, water bag, and carrying case available separately
- » Most orders ship 7-8 business days after proof approval

**Please note that flags need to be placed indoors if winds exceed 30 mph*

SIZES & PRICING {T} *[each]*

| SIZE | QTY 1-10 | QTY 11-25 | QTY 26-50 | QTY 51-100 | QTY 101 + |
|----------------------|----------|-----------|-----------|------------|-----------|
| 8' Kit | \$210.06 | \$201.49 | \$194.34 | \$185.77 | \$168.62 |
| 8' Flag Replacement | \$117.18 | \$112.89 | \$109.32 | \$105.03 | \$95.03 |
| 11' Kit | \$231.50 | \$222.92 | \$215.78 | \$205.78 | \$187.20 |
| 11' Flag Replacement | \$127.18 | \$122.89 | \$118.61 | \$114.32 | \$104.32 |
| 14' Kit | \$252.93 | \$242.93 | \$234.36 | \$224.35 | \$214.35 |
| 14' Flag Replacement | \$137.18 | \$132.90 | \$127.90 | \$123.61 | \$113.61 |





VALUE FEATHER FLAG

Our Value Feather Flag has the same great applications as our Value Rectangle and Tear Drop Flag, but is available in four sizes! The dye-sublimated, single-sided Feather Flag comes in 7 ft, 9 ft, 12 ft, and 15 ft sizes.

ECONOMY FEATHER FLAGS INCLUDE:

- » One full-color, single-sided, rectangle flag with edge-to-edge print
- » One pole set with flag whip
- » One ground stake for installation in grassy areas
- » Cross base, water bag, and carrying case available separately
- » Most orders ship 7-8 business days after proof approval

**Please note that flags need to be placed indoors if winds exceed 30 mph*

SIZES & PRICING *{each}*

| SIZE | QTY 1-10 | QTY 11-25 | QTY 26-50 | QTY 51-100 | QTY 101 + |
|----------------------|----------|-----------|-----------|------------|-----------|
| 7' Kit | \$92.89 | \$90.74 | \$88.60 | \$86.45 | \$84.31 |
| 7' Flag Replacement | \$64.31 | \$62.88 | \$61.45 | \$60.02 | \$58.59 |
| 9' Kit | \$191.49 | \$184.34 | \$178.63 | \$171.48 | \$162.91 |
| 9' Flag Replacement | \$117.18 | \$112.89 | \$109.32 | \$105.03 | \$95.03 |
| 12' Kit | \$211.49 | \$202.92 | \$197.20 | \$190.06 | \$181.48 |
| 12' Flag Replacement | \$127.18 | \$122.89 | \$118.61 | \$114.32 | \$104.32 |
| 15' Kit | \$231.50 | \$221.50 | \$215.78 | \$208.63 | \$200.06 |
| 15' Flag Replacement | \$137.18 | \$132.90 | \$127.90 | \$123.61 | \$113.61 |

Visit www.bannerfulfillment.com for all economy rectangle, teardrop, and feather flag dimensions!

| | DELUXE FEATHER FLAG | VALUE RECTANGLE FLAG | VALUE TEAR DROP FLAG | VALUE FEATHER FLAG |
|---|------------------------|-------------------------|-------------------------|-----------------------|
| Includes custom flag, pole set with whip, and stake base | ● | ● | ● | ● |
| Kit includes carrying case | ● | [Sold Separately] | [Sold Separately] | [Sold Separately] |
| Dye-sublimated print with UV-resistant ink | ● | ● | ● | ● |
| Print complex art and photos | ● | ● | ● | ● |
| 95% ink saturation through reverse side | ● | ● | ● | ● |
| Custom print includes pole sleeve | ● | ● | ● | ● |
| Double-sided print available | ● | | | |
| Designed to stay open in zero wind | ● | ● | ● | ● |
| Reinforced pocket sleeve to prevent tearing | ● | ● | ● | ● |
| Flag attaches to base with reinforced clip | ● | | | |
| Flag attaches to base with elastic band | | ● | ● | ● |
| 360 degree turning radius | ● | ● | ● | ● |
| Heavy duty all-aluminum hardware | ● | | | |
| Steel ball bearing pivot for ultimate durability | ● | | | |
| Pole set includes 2-year warranty (single-sided flags only) | ● | | | |
| Cross base for hard ground applications available | ● | ● | ● | ● |

COMPARE FABRIC FLAG BANNERS

The difference between our Deluxe and Value Flags lies primarily in the hardware. All of our flags are produced on the same 3.2 oz fabric material with the same great print quality, but Deluxe Feather Flags come with stronger all-aluminum pole sets, while our Value Rectangle, Tear Drop, and Feather Flag hardware is constructed of a metal and fiberglass composite.

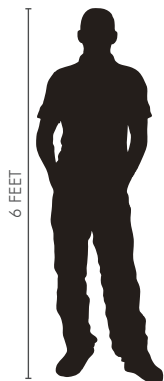


INDOOR DISPLAY KITS

Take your promotion to the next level with our extensive selection of professional indoor display kits. Whether you need free-standing banner displays or high-quality poster hanging kits, we have many options that work great for retail stores, restaurants, trade shows, or showroom floors.

Specially designed to make the most of your available space – no more worrying about how to hang your banners in tricky locations. These stands and hangers set up quickly and easily to advertise your latest sales and promotions, giving you a polished and professional-looking display at a price you can afford.

Art template files for all display kits can be found at www.bannerfulfillment.com.



6 FEET



X-STAND BANNER KIT
24" w x 66" h // 31" w x 70" h // 36" w x 80" h



ADJUSTABLE DISPLAY KIT
24" w x 60" h // 24" w x 48" h (adjustable)



CANTILEVER FABRIC DISPLAY
24" w x 48" h to 84" h (adjustable)



TENSION FABRIC STAND
Widths: 2' // 3' // 4' // 5'
Heights: 5.5' // 7.5' // 9.5'



FABRIC BACKDROP DISPLAYS
Widths: 8' // 10' // 20'
Height: 7.5'



X-STAND BANNER KIT

Our most popular banner and stand combo, the X-Stand Banner Kit is an inexpensive yet professional looking banner display, great for indoor use. This easy to use and versatile stand allows you the flexibility to change graphics and copy as often as needed.

- » One of the most affordable and flexible ways to display your banners
- » Lightweight and simple stand is made of aluminium and fiberglass
- » Four arms reach from a center hub to the 4 corners of the banner, hooking through grommets to hold the banner taut
- » Rear leg is adjustable to balance the banner at any angle, like a tripod
- » Available in 3 sizes: 24" w x 66" h, 31.5" w x 70" h, and 36" w x 80" h
- » Banners are printed on 13 oz Vinyl Banner material [page 6] with grommets in the 4 corners
- » Comes with a black canvas carrying case
- » Recommended for indoor use only
- » Most orders ship 1-2 business days after proof approval
- » Banners require .25" bleed



BANNER & STAND SPECIFICATIONS

36" x 80" Kit Info:

Banner Finished Size: 36" w x 80" h
Footprint: 36" w x 80.5" h x 33.5" d
Weight: 2.2 lbs

31.5" x 70" Kit Info:

Banner Finished Size: 31.5" w x 70" h
Footprint: 31.5" w x 70.5" h x 33.5" d
Weight: 2.8 lbs

24" x 66" Kit Info:

Banner Finished Size: 24" w x 66" h
Footprint: 24" w x 66.5" h x 33.5" d
Weight: 3.7 lb



SIZES & PRICING [each]

| SIZE | QTY 1-9 | QTY 10-24 | QTY 25-49 | QTY 50-99 | QTY 100+ |
|---|----------|-----------|-----------|-----------|----------|
| 24" w x 66" h - Kit {R} | \$92.49 | \$87.32 | \$82.15 | \$76.98 | \$72.92 |
| 24" w x 66" h - Replacement Graphic {P} | \$34.98 | \$32.78 | \$30.58 | \$28.38 | \$27.50 |
| 31.5" w x 70" h - Kit {R} | \$112.49 | \$106.65 | \$100.82 | \$94.99 | \$90.82 |
| 31.5" w x 70" h - Replacement Graphic {P} | \$48.98 | \$45.98 | \$42.98 | \$39.98 | \$38.98 |
| 36" w x 80" h - Kit {R} | \$134.65 | \$127.99 | \$121.32 | \$114.65 | \$109.99 |
| 36" w x 80" h - Replacement Graphic {P} | \$63.58 | \$59.58 | \$55.58 | \$51.58 | \$49.98 |



ADJUSTABLE HEIGHT 12"-72"



ADJUSTABLE DISPLAY KIT

A compact and sleek indoor display with a professional look, the Adjustable Display Kit is perfect for businesses where space is limited, yet it has a large enough display area to grab attention from across a large showroom. Simply snap the signs into the rails, and they are ready for display. Replacement banners now available online.

- » Printed on our Vinyl Poster material - waterproof, tear resistant, and non-curling 15-oz smooth vinyl with blockout layer
- » Comes with two identical signs for front and back display
- » Stand has durable steel construction with powder coated finish
- » Signs easily snap into place using the stand's secure snap rail system
- » Effective as a single-sided or double-sided display
- » Works exceptionally well in longer-term applications such as retail, lobbies, and other interior displays. Kit available in two sizes: 24"w x 48"h and 24"w x 72"h. Most orders ship 1-2 days after proof approval

SIZES & PRICING {R} *(each)*

| SIZE | QTY 1-9 | QTY 10-24 | QTY 25-49 | QTY 50-99 | QTY 100+ |
|-----------------------------------|----------|-----------|-----------|-----------|----------|
| 24"w x 48"h - Single-Sided Kit | \$191.67 | \$185.84 | \$180.00 | \$174.17 | \$168.34 |
| 24"w x 48"h - Double-Sided Kit | \$225.00 | \$218.34 | \$211.67 | \$205.00 | \$198.34 |
| 24"w x 48"h - Replacement Graphic | \$41.67 | \$40.83 | \$40.00 | \$39.17 | \$38.33 |
| 24"w x 72"h - Single-Sided Kit | \$211.67 | \$205.42 | \$199.17 | \$192.92 | \$186.67 |
| 24"w x 72"h - Double-Sided Kit | \$265.01 | \$256.67 | \$248.34 | \$240.00 | \$231.67 |
| 24"w x 72"h - Replacement Graphic | \$61.67 | \$60.42 | \$59.17 | \$57.92 | \$56.67 |

SNAP RAILS MAKE
BANNER CHANGES
QUICK AND EASY



BANNER & STAND SPECIFICATIONS

24" x 48" Kit Info:

Banner Visible Area: 24" w x 47.5" h
Banner/Artwork Size: 24" w x 48" h
{0.25" bleed top & bottom}

24" x 72" Kit Info:

Banner Visible Area: 24" w x 71.5" h
Banner/Artwork Size: 24" w x 72" h
{0.25" bleed top & bottom}

Overall Display Height: Adjustable up to 92"
Stand weight: 16 lbs



CANTILEVER FABRIC DISPLAY

This free-standing fabric banner display makes it easy to advertise in locations where space is limited. The stand's unique and sophisticated design goes perfectly with our beautiful fabric banners, creating an atmosphere of professionalism that is sure to impress!

- » Printed on our beautiful Satin Fabric Banner material *(page 16)*
- » Banners come with grommets in the top two corners for easy hanging
- » Banners are flush cut using hot knife edge-finishing for an elegant look that eliminate fraying
- » Black stand with durable steel construction and powder coat finish
- » Stand features adjustable heights from 46" high to 84" high
- » Primarily recommended for indoor use, but may be used short-term in low-wind outdoor environments
- » Available single or double-sided; double-sided signs consist of two single-sided signs hung back to back
- » Kit is available in four sizes: 2x4, 2x5, 2x6, and 2x7
- » Most cantilever fabric banners ship 7-8 days after proof approval; stand ships separately



BANNER & STAND SPECIFICATIONS

Resolution: 150 dpi at full print size recommended

Bleed: None

Overall Display Height: Adjustable up to 92"

Stand Weight: 14 lbs



BANNER GROMMETS ATTACH TO STAND HOOKS FOR EASY INSTALLATION

SIZES & PRICING {R} *(each)*

| SIZE | QTY 1-9 | QTY 10-24 | QTY 25-49 | QTY 50-99 | QTY 100+ |
|---------------------------------|----------|-----------|-----------|-----------|----------|
| 2'w x 4'h - Single | \$165.00 | \$155.00 | \$145.00 | \$135.00 | \$125.00 |
| 2'w x 4'h - Double | \$205.00 | \$191.67 | \$178.34 | \$165.00 | \$151.67 |
| 2'w x 4'h - Replacement Graphic | \$40.00 | \$38.75 | \$37.50 | \$36.25 | \$35.00 |
| 2'w x 5'h - Single | \$175.00 | \$165.00 | \$155.00 | \$145.00 | \$135.00 |
| 2'w x 5'h - Double | \$225.00 | \$211.67 | \$198.34 | \$185.00 | \$171.67 |
| 2'w x 5'h - Replacement Graphic | \$50.00 | \$48.33 | \$46.67 | \$45.00 | \$43.33 |
| 2'w x 6'h - Single | \$185.00 | \$173.34 | \$161.67 | \$150.00 | \$138.34 |
| 2'w x 6'h - Double | \$245.00 | \$228.34 | \$211.67 | \$195.00 | \$178.34 |
| 2'w x 6'h - Replacement Graphic | \$60.00 | \$57.92 | \$55.83 | \$53.75 | \$51.67 |
| 2'w x 7'h - Single | \$195.00 | \$183.34 | \$171.67 | \$160.00 | \$148.34 |
| 2'w x 7'h - Double | \$265.01 | \$248.34 | \$231.67 | \$215.00 | \$198.34 |
| 2'w x 7'h - Replacement Graphic | \$70.00 | \$67.50 | \$65.00 | \$62.50 | \$60.00 |



FABRIC BACKDROP DISPLAY

Our new Fabric Backdrop Displays (a.k.a. Step-&-Repeat Backdrop Displays) are made of lightweight aluminum frames with flanged ends and interlocking-button construction, making the task of setup easy for one person to handle. The steel base provides adequate stability for indoor usage. The material is special 260 gram stretchable polyester, and is washable in cold water. Sure to impact, these dye-sublimated displays are available single-sided or double-sided and pull over the aluminum frame like a pillow case.

- » Perfect for use as a step-and-repeat backdrop
- » All backdrops are 7.5' tall; three widths available: 8 ft, 10 ft, and 20 ft
- » Most orders ship 7-8 business days after proof approval

SIZES & PRICING {U} *[each]*

| SIZE | QTY 1-9 | QTY 10-24 | QTY 25-49 | QTY 50-99 | QTY 100+ |
|---------------------------------|-----------|-----------|-----------|-----------|-----------|
| 8' Kit - Single-Sided | \$758.65 | \$737.31 | \$718.65 | \$699.98 | \$682.65 |
| 8' Kit - Double-Sided | \$1183.97 | \$1151.97 | \$1121.31 | \$1093.31 | \$1065.31 |
| 8' Graphic Only - Single-Sided | \$425.32 | \$413.32 | \$402.66 | \$391.11 | \$382.66 |
| 8' Graphic Only - Double-Sided | \$850.65 | \$827.98 | \$805.31 | \$785.31 | \$765.31 |
| 10' Kit - Single-Sided | \$865.31 | \$842.65 | \$819.98 | \$798.65 | \$778.65 |
| 10' Kit - Double-Sided | \$1278.63 | \$1243.97 | \$1210.64 | \$1179.97 | \$1150.64 |
| 10' Graphic Only - Single-Sided | \$517.32 | \$503.99 | \$490.65 | \$477.32 | \$465.32 |
| 10' Graphic Only - Double-Sided | \$930.64 | \$905.31 | \$881.31 | \$858.65 | \$837.31 |
| 20' Kit - Single-Sided | \$1549.29 | \$1506.63 | \$1466.63 | \$1429.30 | \$1393.30 |
| 20' Kit - Double-Sided | \$1998.62 | \$1945.28 | \$1893.29 | \$1845.29 | \$1798.62 |
| 20' Graphic Only - Single-Sided | \$883.98 | \$859.98 | \$837.31 | \$815.98 | \$795.98 |
| 20' Graphic Only - Double-Sided | \$1331.97 | \$1297.30 | \$1263.97 | \$1231.97 | \$1199.97 |





TENSION FABRIC DISPLAY

Our new Tension Fabric Display products are some of the most innovative indoor displays that have been developed in decades. The frames are made of lightweight aluminum tubing with flanged ends and interlocking button construction, making setup a breeze. The steel base adds a sturdy foundation, keeping your display anchored for use in any indoor area. Printed on 260 gram stretchable polyester fabric, these beautiful dye-sublimated displays are available single-sided or double-sided and pull over the aluminum frame like a pillow case. Washable in cold water. This unique display makes changing out your message easy and affordable.

- » Most orders ship 7-8 business days after proof approval
- » Carrying cases available separately
- » Easy pullover graphic replacement



SIZES & PRICING *[each]*

| SIZE | QTY 1-9 | QTY 10-24 | QTY 25-49 | QTY 50-99 | QTY 100+ |
|---|----------|-----------|-----------|-----------|----------|
| 2'w x 5.5'h - Single-Sided - Kit | \$157.33 | \$153.33 | \$149.33 | \$145.33 | \$141.33 |
| 2'w x 5.5'h - Double-Sided - Kit | \$181.33 | \$176.00 | \$170.66 | \$165.33 | \$161.33 |
| 2'w x 5.5'h - Single-Sided - Graphic Only | \$105.33 | \$101.33 | \$97.33 | \$93.33 | \$90.66 |
| 2'w x 5.5'h - Double-Sided - Graphic Only | \$126.66 | \$122.66 | \$120.00 | \$116.00 | \$112.00 |
| 2'w x 7.5'h - Single-Sided - Kit | \$173.33 | \$168.00 | \$164.00 | \$158.66 | \$154.66 |
| 2'w x 7.5'h - Double-Sided - Kit | \$192.00 | \$185.33 | \$180.00 | \$174.66 | \$170.66 |
| 2'w x 7.5'h - Single-Sided - Graphic Only | \$122.66 | \$117.33 | \$113.33 | \$109.33 | \$105.33 |
| 2'w x 7.5'h - Double-Sided - Graphic Only | \$138.66 | \$133.33 | \$129.33 | \$125.33 | \$122.66 |
| 3'w x 5.5'h - Single-Sided - Kit | \$202.66 | \$197.33 | \$192.00 | \$186.66 | \$181.33 |
| 3'w x 5.5'h - Double-Sided - Kit | \$219.99 | \$213.33 | \$207.99 | \$201.33 | \$196.00 |
| 3'w x 5.5'h - Single-Sided - Graphic Only | \$145.33 | \$140.00 | \$134.66 | \$130.66 | \$125.33 |
| 3'w x 5.5'h - Double-Sided - Graphic Only | \$160.00 | \$156.00 | \$150.66 | \$146.66 | \$141.33 |
| 3'w x 7.5'h - Single-Sided - Kit | \$222.66 | \$215.99 | \$209.33 | \$203.99 | \$198.66 |
| 3'w x 7.5'h - Double-Sided - Kit | \$238.66 | \$231.99 | \$225.33 | \$218.66 | \$211.99 |
| 3'w x 7.5'h - Single-Sided - Graphic Only | \$166.66 | \$160.00 | \$154.66 | \$149.33 | \$144.00 |
| 3'w x 7.5'h - Double-Sided - Graphic Only | \$180.00 | \$174.66 | \$169.33 | \$164.00 | \$160.00 |
| 4'w x 5.5'h - Single-Sided - Kit | \$245.33 | \$238.66 | \$231.99 | \$225.33 | \$219.99 |
| 4'w x 5.5'h - Double-Sided - Kit | \$275.99 | \$266.66 | \$259.99 | \$251.99 | \$245.33 |
| 4'w x 5.5'h - Single-Sided - Graphic Only | \$173.33 | \$166.66 | \$160.00 | \$154.66 | \$149.33 |
| 4'w x 5.5'h - Double-Sided - Graphic Only | \$200.00 | \$194.66 | \$188.00 | \$182.66 | \$177.33 |
| 4'w x 7.5'h - Single-Sided - Kit | \$263.99 | \$255.99 | \$249.33 | \$242.66 | \$235.99 |
| 4'w x 7.5'h - Double-Sided - Kit | \$293.33 | \$285.33 | \$277.33 | \$269.33 | \$261.33 |
| 4'w x 7.5'h - Single-Sided - Graphic Only | \$192.00 | \$185.33 | \$178.66 | \$172.00 | \$166.66 |
| 4'w x 7.5'h - Double-Sided - Graphic Only | \$219.99 | \$213.33 | \$206.66 | \$200.00 | \$194.66 |

| | | | | | |
|---|----------|----------|----------|----------|----------|
| 5'w x 5.5'h - Single-Sided - Kit | \$298.66 | \$290.66 | \$282.66 | \$274.66 | \$266.66 |
| 5'w x 5.5'h - Double-Sided - Kit | \$330.66 | \$321.33 | \$311.99 | \$302.66 | \$294.66 |
| 5'w x 5.5'h - Single-Sided - Graphic Only | \$211.99 | \$203.99 | \$196.00 | \$189.33 | \$182.66 |
| 5'w x 5.5'h - Double-Sided - Graphic Only | \$239.99 | \$233.33 | \$225.33 | \$218.66 | \$211.99 |
| 5'w x 7.5'h - Single-Sided - Kit | \$323.99 | \$314.66 | \$306.66 | \$297.33 | \$290.66 |
| 5'w x 7.5'h - Double-Sided - Kit | \$357.32 | \$346.66 | \$337.32 | \$327.99 | \$318.66 |
| 5'w x 7.5'h - Single-Sided - Graphic Only | \$239.99 | \$230.66 | \$221.33 | \$213.33 | \$206.66 |
| 5'w x 7.5'h - Double-Sided - Graphic Only | \$269.33 | \$261.33 | \$253.33 | \$245.33 | \$237.33 |



ARTWORK SPECIFICATIONS

Art files should be set up at the exact size of the ordered product.

For example, art files for a 4'w x 5.5'h display should be set up at exactly 48" w x 66" h.

TABLE THROWS

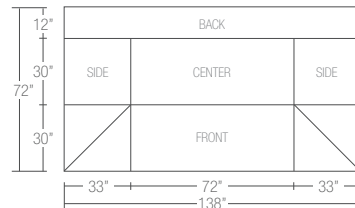


SATIN FABRIC TABLE THROWS

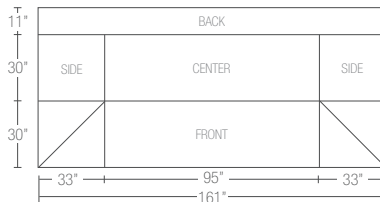
Looking for a way to advertise at trade shows, meetings, school functions, and hospitality events while dressing up your banquet tables? Our unique Fabric Table Covers offer a great way to display brands, logos, and messages at conventions, meetings, job fairs, and expositions. Featuring an edge-to-edge full color dye-sublimation print, our table covers will help you stand out from the competition.

- » Dye-sublimated full-color print on beautiful 9 oz polyester, white with satin finish
- » Wrinkle-resistant, lightweight, and durable
- » High print quality even with complex or photo-quality artwork
- » Your custom design covers the entire table cover from edge-to-edge
- » Available in standard sizes for 6 ft and 8 ft folding tables; includes a 6" rear panel, allowing easy access to materials stored under the table
- » Recommended for indoor or short-term outdoor use
- » Most orders ship 7-8 business days after proof approval
- » Same material as our Satin Fabric Banners *(page 16)*

6' TABLE COVER SPECIFICATIONS



8' TABLE COVER SPECIFICATIONS



TEMPLATES AVAILABLE FOR DOWNLOAD AT
WWW.BANNERFULFILLMENT.COM

SIZES & PRICING {U} *(each)*

| SIZE | QTY 1-9 | QTY 10-24 | QTY 25-49 | QTY 50-99 | QTY 100+ |
|----------------|----------|-----------|-----------|-----------|----------|
| 6' Table Throw | \$206.66 | \$201.99 | \$197.33 | \$192.66 | \$188.00 |
| 8' Table Throw | \$225.33 | \$220.33 | \$215.33 | \$210.33 | \$205.33 |



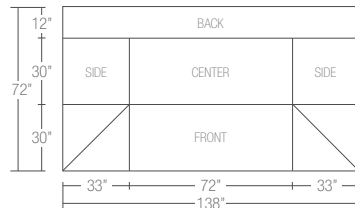
PREMIUM MATTE TABLE THROWS

Advertise at trade shows, meetings, school functions, and hospitality events while dressing up your banquet tables. Our Table Throws offer a great way to display brands, logos, and messages at conventions, meetings, job fairs, and expositions. Printed in full color on our new Premium Matte polyester fabric using dye sublimation - your image will extend from edge-to-edge of the material.

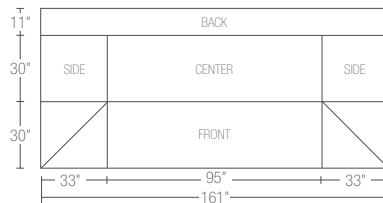
Covers three full sides of your table with 10" overhang on the back side. Available for 6' and 8' wide folding tables.

- » Dye-sublimated full-color print on 8 oz matte polyester
- » Wrinkle-resistant, lightweight, and durable
- » High print quality even with complex or photo-quality artwork
- » Your custom design covers the entire table cover from edge-to-edge
- » Recommended for indoor or short-term outdoor use
- » Most orders ship 7-8 business days after proof approval

6' TABLE COVER SPECIFICATIONS



8' TABLE COVER SPECIFICATIONS



TEMPLATES AVAILABLE FOR DOWNLOAD AT
WWW.BANNERFULFILLMENT.COM

SIZES & PRICING {U} *(each)*

| SIZE | QTY 1-9 | QTY 10-24 | QTY 25-49 | QTY 50-99 | QTY 100+ |
|----------------|----------|-----------|-----------|-----------|----------|
| 6' Table Throw | \$166.66 | \$162.00 | \$157.33 | \$152.66 | \$148.00 |
| 8' Table Throw | \$185.33 | \$180.00 | \$174.66 | \$169.33 | \$164.00 |

OUTDOOR DISPLAY KITS

Our outdoor display kits make it easy to entice potential shoppers, welcome guests to your business, showcase daily specials, or draw attention to community events. All outdoor kits include single-sided or double-sided graphics and sturdy hardware built to withstand tough weather conditions. Inexpensive replacement graphics for all outdoor kits can now be ordered separately.

Art template files for all display kits can be found at www.bannerfulfillment.com.



Looking for outdoor flag kits? See page 41.



OUTDOOR BANNER FRAME
3'x6' // 4'x8' // 4'x10'



FLEX TOWER BANNER KIT
23"x78"



A-FRAME SIDEWALK KIT
24"x36"



FLEX SIDEWALK KIT
23"x33"



A-FRAME SIDEWALK KIT

These rugged A-Frame signs are an inexpensive way to attract new customers to your business. Setup is a snap – just spread the feet at the bottom of the sign, and your display is ready to go. Highly wind-proof, these stands can be ballasted by filling them with dry sand, yet they are still light enough to be easily repositioned throughout the day.

Available in both white and black frames.

- » Holds two 24" w x 36" h adhesive signs that are displayed on each side of the stand
- » Printed in full color on our Adhesive Non-Slip Floor Vinyl material *(page 33)* with semipermanent adhesive
- » Full-color print with UV-resistant inks to prevent fading
- » Made of high-grade plastics that can withstand years of use without warping, cracking, or fading
- » Lightweight and compact, folds up for easy storage
- » Stand comes ready to use with displays already attached
- » Inexpensive replacement signs are now available for this kit
- » Stand can be internally ballasted with dry sand - 5 lbs per side recommended
- » Molded handle for easy portability
- » Molded stacking lugs make it easy to securely stack multiple signs in storage
- » Most orders ship 1-2 business days after proof approval

SIZES & PRICING *(each)*

| SIZE | QTY 1-9 | QTY 10-24 | QTY 25-49 | QTY 50-99 | QTY 100+ |
|--------------------------------------|----------|-----------|-----------|-----------|----------|
| Double-sided kit {U} | \$140.00 | \$137.33 | \$134.66 | \$132.00 | \$129.33 |
| Single-sided replacement graphic {P} | \$44.00 | \$43.00 | \$42.00 | \$41.00 | \$40.00 |

BANNER & STAND SPECIFICATIONS

Banner Visible Area: 24" w x 36" h

Banner Print/Artwork Size: 24" w x 36" h

Display Footprint: 24.5" w x 45.25" h x 31.25" d (open)

Kit Weight: 19 lbs





FLEX TOWER BANNER KIT

Our Flex Tower Banner Kit is a fantastic outdoor display, perfect for sidewalks and storefronts. This double-sided banner kit has maximum visibility and marketing potential. With 6+ feet of display, it is sure to be noticed.

- » Printed on our 13 oz Vinyl Banner material *[page 6]* in full color with UV-resistant ink
- » A perfect display for sidewalks and storefronts, waterproof and tear-resistant
- » Includes one 12'10"h x 23"w banner that folds over the hardware to create one 78"h x 23"w two-sided banner display
- » Heat-welded hems on three edges with a bottom pole pocket which attaches to the stand's bottom rail
- » Banner folds over the top rail of the stand and attaches at the bottom rail with velcro strips
- » Stand's steel frame is spring-mounted on a wide-set base, allowing the display to flex with the wind without tipping over
- » Most orders ship 1-2 business days after proof approval
- » Some assembly required; hardware kit and tools are provided



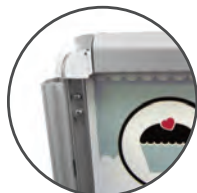
STAND FRAME IS
SPRING MOUNTED
ON A WIDE-SET
RAIL BASE, ALLOWING
BANNER TO FLEX IN
THE WIND WITHOUT
TIPPING OVER

BANNER & STAND SPECIFICATIONS

Banner Visible Area: 23"w x 78"h {each side}
Banner Print Size: 23.5"w x 159.5"h
Display Footprint: 30.5"w x 43.5"d x 85"h
Kit Weight: 35.25 lbs

SIZES & PRICING *[each]*

| SIZE | QTY 1-9 | QTY 10-24 | QTY 25-49 | QTY 50-99 | QTY 100+ |
|-------------------------|----------|-----------|-----------|-----------|----------|
| Double-sided kit (U) | \$331.99 | \$326.66 | \$321.33 | \$315.99 | \$310.66 |
| Replacement graphic (P) | \$98.00 | \$94.00 | \$90.00 | \$86.00 | \$82.00 |



FLEX SIDEWALK KIT

The perfect sidewalk and storefront display! Our Flex Sidewalk Kit allows for interchangeable graphics in a heavy-duty windproof casing. The stand's easy-to-use snap frame allows graphics/copy to be changed quickly. Great for restaurants, grocery, retail and convenience stores, and auto-maintenance centers. Whether on a downtown sidewalk or a showroom floor, this display is guaranteed to grab your customers' attention.

- » Complete with two identical 23" w x 33" h signs for front and back display; inexpensive replacement signs are also available
- » Printed digitally in full color on our high-quality Vinyl Poster *[page 39]* waterproof material - producing sharp, vivid images with fade-resistant inks
- » Includes a clear, scratch-resistant, waterproof cover sheet for extra outdoor durability
- » This stand's strong spring mechanism and base balance system ensures your display won't blow over in the wind
- » Heavy-duty stand snaps cover sheet and poster display in place, holding secure until you are ready to replace your poster display
- » Most orders ship 2-3 business days after proof approval
- » Some assembly required

SIZES & PRICING *(each)*

| SIZE | QTY 1-9 | QTY 10-24 | QTY 25-49 | QTY 50-99 | QTY 100+ |
|--------------------------------------|----------|-----------|-----------|-----------|----------|
| Double-sided kit (T) | \$341.53 | \$337.24 | \$332.96 | \$328.67 | \$324.38 |
| Single-Sided Replacement graphic (R) | \$31.67 | \$30.83 | \$30.00 | \$29.17 | \$28.33 |

BANNER & STAND SPECIFICATIONS

Banner Visible Area: 23" w x 33" h
Banner Print/Artwork Size: 25.5" w x 33.5" h {0.5" bleed}
Display Footprint: 45" h x 23.5" w x 29" d
Kit Weight: 35 lbs



STAND FRAME IS
 SPRING MOUNTED
 ON WIDE-SET RAIL
 BASE, ALLOWING
 BANNER TO FLEX IN
 THE WIND WITHOUT
 TIPPING OVER





OUTDOOR BANNER FRAME KIT

Introducing a unique new way to display your outdoor banners. Manufactured in our own plant in Kansas City - you won't find these anywhere else! Great for outdoor/roadside advertising. Simply assemble the interlocking pieces, install the assembled hardware in a soft-ground/grassy area using the included ground stakes, and fasten the banner to the frame with bungees for a long-lasting outdoor display.

- »Kit includes one or two banners, hardware, and ball bungees
- »Signage is secured inside the frame with bungee cords
- »Flanged tube frame is constructed from 1.25" diameter steel tubing with black powder coat
- »Portable and easy to assemble with interlock button construction
- »One-year hardware warranty

Banners/bungees and hardware ship separately. Banners ship within 1 business day for proofs approved before 3:00 pm Central (banners approved after 3:00 pm CST will ship in two business days). Hardware ships within 3 business days of proof approval.



BANNER & STAND SPECIFICATIONS

3' x 6' Kit Info:

Banner Visible Area: 72"w x 36"h

Banner/Artwork Size: 72.5"w x 36.5"h [0.25" bleed top & bottom]

4' x 8' Kit Info:

Banner Visible Area: 96"w x 48"h

Banner/Artwork Size: 96.5"w x 48.5"h [0.25" bleed top & bottom]

4' x 10' Kit Info:

Banner Visible Area: 120"w x 48"h

Banner/Artwork Size: 120.5"w x 48.5"h [0.25" bleed top & bottom]



SIZES & PRICING (T) *{each}*

| STANDARD 13 OZ VINYL <small>(page 6)</small> OUTDOOR BANNER FRAME KIT | QTY 1-9 | QTY 10-24 | QTY 25-49 | QTY 50-99 | QTY 100+ |
|--|----------|-----------|-----------|-----------|----------|
| 3'h x 6'w - Single-Sided - Kit | \$194.34 | \$189.34 | \$184.34 | \$179.34 | \$174.34 |
| 3'h x 6'w - Double-Sided - Kit | \$232.93 | \$225.07 | \$217.21 | \$209.35 | \$201.49 |
| 4'h x 8'w - Single-Sided - Kit | \$231.50 | \$225.42 | \$219.35 | \$213.28 | \$207.21 |
| 4'h x 8'w - Double-Sided - Kit | \$301.52 | \$286.51 | \$271.51 | \$256.51 | \$241.50 |
| 4'h x 10'w - Single-Sided - Kit | \$274.37 | \$267.58 | \$260.79 | \$254.00 | \$247.22 |
| 4'h x 10'w - Double-Sided - Kit | \$362.97 | \$344.39 | \$325.81 | \$307.24 | \$288.66 |

| 18 OZ VINYL <small>(page 8)</small> OUTDOOR BANNER FRAME KIT | QTY 1-9 | QTY 10-24 | QTY 25-49 | QTY 50-99 | QTY 100+ |
|---|----------|-----------|-----------|-----------|----------|
| 3'h x 6'w - Single-Sided - Kit | \$197.20 | \$192.20 | \$187.20 | \$182.20 | \$177.20 |
| 3'h x 6'w - Double-Sided - Kit | \$244.36 | \$235.07 | \$225.78 | \$216.49 | \$207.21 |
| 4'h x 8'w - Single-Sided - Kit | \$235.79 | \$229.71 | \$223.64 | \$217.57 | \$211.49 |
| 4'h x 8'w - Double-Sided - Kit | \$320.10 | \$302.95 | \$285.80 | \$268.65 | \$251.50 |
| 4'h x 10'w - Single-Sided - Kit | \$281.51 | \$274.37 | \$267.22 | \$260.08 | \$252.93 |
| 4'h x 10'w - Double-Sided - Kit | \$387.26 | \$365.47 | \$343.67 | \$321.88 | \$300.09 |

| MESH VINYL <small>(page 9)</small> OUTDOOR BANNER FRAME KIT | QTY 1-9 | QTY 10-24 | QTY 25-49 | QTY 50-99 | QTY 100+ |
|--|----------|-----------|-----------|-----------|----------|
| 3'h x 6'w - Single-Sided - Kit | \$198.63 | \$193.63 | \$188.63 | \$183.63 | \$178.63 |
| 3'h x 6'w - Double-Sided - Kit | \$247.22 | \$238.29 | \$229.35 | \$220.42 | \$211.49 |
| 4'h x 8'w - Single-Sided - Kit | \$238.64 | \$232.57 | \$226.50 | \$220.42 | \$214.35 |
| 4'h x 8'w - Double-Sided - Kit | \$327.24 | \$310.45 | \$293.66 | \$276.87 | \$260.08 |
| 4'h x 10'w - Single-Sided - Kit | \$284.37 | \$277.23 | \$270.08 | \$262.94 | \$255.79 |
| 4'h x 10'w - Double-Sided - Kit | \$395.83 | \$374.76 | \$353.68 | \$332.60 | \$311.52 |





DYE-SUBLIMATION APPAREL

Dye-Sublimation unties a world of opportunities for your custom apparel!

Announcing the launch of Caring Clothing, a unique dye-sublimation apparel line! Caring Clothing supports the Global Orphan Project by providing dignified work and living wages for workers in Port-au-Prince, Haiti. These jobs are a lifeline for families in Haiti, where 80% of adults are jobless or underemployed.

All printing, color management, cutting, and sewing takes place in our state-of-the-art manufacturing facility in Port-au-Prince. The efficiency of this process allows for the production of high-quality, dye-sub printing and expert sewing at affordable prices with quick turnaround. Thanks to the HOPE Act, all garments are air-shipped duty-free straight to the consumer anywhere in the United States.

Cut & Sew Apparel

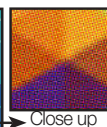
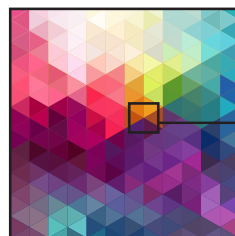
Cut & Sew Dye-Sublimation is the best of both worlds. First, you get vibrant, full-color images sublimated directly into the material. Unlike screen printing, the dye in dye-sublimation printing bonds to the polyester fibers of the fabric for a soft-to-the-hand feel. After your design is sublimated into the fabric, the fabric is then cut to the design specification and sewn into the finished garment. And because the fabric is sublimated before sewing takes place, you don't have smudges and white streaks near the edges of the garment.

Fabric & Finishing

Dye-sublimation is best suited for printing on synthetic fabrics for performance wear. Caring Clothing garments are made of Polyester Micro Fiber T-Shirt Jersey, a high-quality polyester fabric ideal for everyday T-shirts and active wear. This fabric is lightweight with a silky texture, perfect for soft, smooth T-shirts.

The Polyester Micro Fiber T-Shirt Jersey also features a wicking finish, which pulls moisture away from the skin to the exterior of the garment. This facilitates faster evaporation and keeps the wearer dry and comfortable. Buttons and thread are chosen to complement the design.

Comparison of Screen Printing vs Dye Sublimation



Screen Printing

Image information is split into CMYK color screens, each color is printed in halftone dots.

Dye Sublimation

Images can be printed without halftone dots. Images are high resolution and near photo quality.



Apparel Styles

Because Caring Clothing utilizes a cut & sew dye-sublimation technique, custom designs must be placed onto existing templates prior to production. This is because the fabric rolls go through the sublimation machine first, and then are cut & sewn into the finished garment.

Caring Clothing currently has the following templates in sizes Small, Medium, Large, X-Large, 2X-5X:

Short Sleeve Crew Neck T-Shirt

» Men's

» Ladies'

Short Sleeve V-Neck Shirt

» Men's

» Ladies'

Unisex Long Sleeve Crew Neck Shirt

Unisex Polo/Golf Short Sleeve Shirt

SHIRT TEMPLATE BREAKDOWN

Below you'll see what a typical shirt template looks like that we use to design and print our shirts. Each piece is printed separately, hand cut, and then sewn together to create the finished apparel. We can either design the shirt with a little guidance from you, or we can provide you with the templates so you can custom-create your own designs.



Turnaround

Allow two weeks from proof approval for production for most orders. Email leslie@wholesalebannersonline.com to verify production time. Garments ship from Port-au-Prince. Allow two days for shipping to areas where DHL delivers regularly; extra time required in areas where DHL does not make daily deliveries.

The Global Orphan Project: Port-au-Prince, Haiti

The Global Orphan Project is a non-profit organization dedicated to global orphan care and prevention. By providing a clean and safe working facility in Port-au-Prince, this organization pays a living wage and benefits to workers to better care for their families.



**INQUIRE ABOUT
YOUTH SIZES!**

SHORT SLEEVE CREW NECK T-SHIRT

The Short-Sleeve T-Shirt has a crew neck and short sleeves. Available in sizes Small-5XL in both a men's and ladies' cut. The polyester fabric is lightweight with a silky texture and features a wicking finish which pulls moisture away from the skin to the exterior of the garment, facilitating faster evaporation.



SIZES & PRICING *(each)* price includes shipping and design work

| Size | QTY 10-24 {T} | QTY 25-99 {T} | QTY 100-249 {T} | QTY 250-499 {U} | QTY 500-749 {U} | QTY 750-999 {V} | QTY 1000-4999 {V} | QTY 5000-9999 {W} | QTY 10000+ {W} |
|------------------|---------------|---------------|-----------------|-----------------|-----------------|-----------------|-------------------|-------------------|----------------|
| S-XL | \$38.44 | \$31.30 | \$29.87 | \$26.53 | \$25.20 | \$22.38 | \$21.13 | \$18.71 | \$17.53 |
| Upcharge for 2XL | \$3.57 | \$3.57 | \$3.57 | \$3.33 | \$3.33 | \$3.13 | \$3.13 | \$2.94 | \$2.94 |
| Upcharge for 3XL | \$5.00 | \$5.00 | \$5.00 | \$4.67 | \$4.67 | \$4.38 | \$4.38 | \$4.12 | \$4.12 |
| Upcharge for 4XL | \$6.43 | \$6.43 | \$6.43 | \$6.00 | \$6.00 | \$5.63 | \$5.63 | \$5.29 | \$5.29 |
| Upcharge for 5XL | \$7.86 | \$7.86 | \$7.86 | \$7.33 | \$7.33 | \$6.88 | \$6.88 | \$6.47 | \$6.47 |

Economy Air Cargo Freight shipping available for orders over 1,000 garments. Discount applies, additional lead time required.



SHORT SLEEVE V-NECK T-SHIRT

The Short Sleeve V-Neck Shirt has a stylish V-Neck and short sleeves. Available in both a men's and ladies' cut in sizes Small-5XL.



UNISEX SHORT SLEEVE SOCCER CREW SHIRT

The Unisex Soccer Crew Shirt has a notched collar and short sleeves. Available in sizes Small-5XL in a unisex cut. Order true-to-size for men's sizes; order one size down for ladies' sizes.



SIZES & PRICING *(each)* price includes shipping and design work

| Size | QTY 10-24 {T} | QTY 25-99 {T} | QTY 100-249 {T} | QTY 250-499 {U} | QTY 500-749 {U} | QTY 750-999 {V} | QTY 1000-4999 {V} | QTY 5000-9999 {W} | QTY 10000+ {W} |
|------------------|---------------|---------------|-----------------|-----------------|-----------------|-----------------|-------------------|-------------------|----------------|
| S-XL | \$38.44 | \$31.30 | \$29.87 | \$26.53 | \$25.20 | \$22.38 | \$21.13 | \$18.71 | \$17.53 |
| Upcharge for 2XL | \$3.57 | \$3.57 | \$3.57 | \$3.33 | \$3.33 | \$3.13 | \$3.13 | \$2.94 | \$2.94 |
| Upcharge for 3XL | \$5.00 | \$5.00 | \$5.00 | \$4.67 | \$4.67 | \$4.38 | \$4.38 | \$4.12 | \$4.12 |
| Upcharge for 4XL | \$6.43 | \$6.43 | \$6.43 | \$6.00 | \$6.00 | \$5.63 | \$5.63 | \$5.29 | \$5.29 |
| Upcharge for 5XL | \$7.86 | \$7.86 | \$7.86 | \$7.33 | \$7.33 | \$6.88 | \$6.88 | \$6.47 | \$6.47 |

Economy Air Cargo Freight shipping available for orders over 1,000 garments. Discount applies, additional lead time required.



UNISEX LONG-SLEEVE CREW SHIRT

The Unisex Long-Sleeve Crew Shirt has a crew neck and long cuffed sleeves. Available in sizes Small-5XL in a unisex cut. Order true-to-size for men's sizes; order one size down for ladies' sizes.



SIZES & PRICING *(each)*

| Size | QTY 10-24 {T} | QTY 25-99 {T} | QTY 100-249 {T} | QTY 250-499 {U} | QTY 500-749 {U} | QTY 750-999 {V} | QTY 1000-4999 {V} | QTY 5000-9999 {W} | QTY 10000+ {W} |
|--|---------------|---------------|-----------------|-----------------|-----------------|-----------------|-------------------|-------------------|----------------|
| Unisex Long Sleeve Crew: Small-XL | \$39.87 | \$32.72 | \$31.30 | \$27.87 | \$26.53 | \$23.63 | \$22.38 | \$19.89 | \$18.71 |
| Unisex Short Sleeve Polo Shirt: Small-XL | \$41.30 | \$34.15 | \$32.72 | \$29.20 | \$27.87 | \$24.88 | \$23.63 | \$21.06 | \$19.89 |
| Upcharge for 2XL | \$3.57 | \$3.57 | \$3.57 | \$3.33 | \$3.33 | \$3.13 | \$3.13 | \$2.94 | \$2.94 |
| Upcharge for 3XL | \$5.00 | \$5.00 | \$5.00 | \$4.67 | \$4.67 | \$4.38 | \$4.38 | \$4.12 | \$4.12 |
| Upcharge for 4XL | \$6.43 | \$6.43 | \$6.43 | \$6.00 | \$6.00 | \$5.63 | \$5.63 | \$5.29 | \$5.29 |
| Upcharge for 5XL | \$7.86 | \$7.86 | \$7.86 | \$7.33 | \$7.33 | \$6.88 | \$6.88 | \$6.47 | \$6.47 |



UNISEX SHORT SLEEVE POLO SHIRT

The Unisex Polo Shirt is a short-sleeved collared shirt with two buttons at the neck. Available in sizes Small-5XL in a unisex cut. Order true-to-size for men's sizes; order one size down for ladies' sizes.



Economy Air Cargo Freight shipping available for orders over 1,000 garments. Discount applies, additional lead time required.



**Our Dye-Sublimation
Cut & Sew Apparel
division will create
magic with photographic
quality apparel designs!**

SHIPPING

Allow approximately two weeks in production from proof approval for most orders. Please email leslie@wholesalebannersonline.com to verify production time. Two shipping options are available:

Two Day Air Shipping

- » Garments blind ship from Port-au-Prince directly to the customer
- » Allow 2 business days for the shipment to leave Port-au-Prince and arrive at the destination, if the destination is located within an area where DHL delivers regularly. Extra processing time is required to locations where DHL does not make daily deliveries, and varies based on the delivery schedule

Economy Air Cargo Freight Shipping

- » Available only for quantities of 1,000 or more
- » Ships from Port-au-Prince to our distribution center in Kansas City the Thursday after production completion
- » Shipment clears customs in KC then is blind shipped to customer via UPS
- » Customer responsible for cost of UPS shipping from KC (Ground, 2nd Day Air, or Next Day Air), plus a brokerage fee. A \$200 flat brokerage fee applies to all economy air cargo shipments
- » Allow 7 business days for the shipment to leave Port-au-Prince, clear customs, and arrive in Kansas City

APPAREL ORDERING PROCESS

- {1}** Email leslie@wholesalebannersonline.com order details: including desired style, sizes, and quantity breakdown of each size. Also send any artwork, if available.
- {2}** Work with our design team to finalize your artwork on the available templates. Please note that production will not begin until final proof approval.
- {3}** Submit payment. Please note that payment in full is required before production may begin. This applies to all customers, regardless of credit standing.

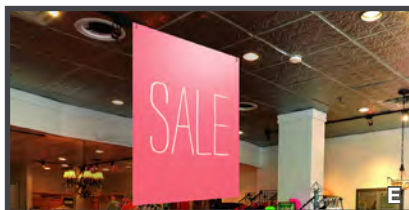
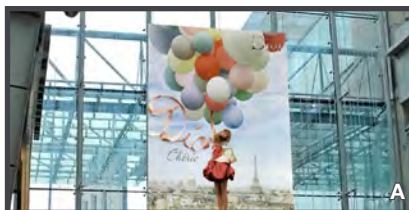
Apparel pre-production samples may be requested for a fee of \$100.00. Payment is required before production begins on the sample.

Please allow two weeks for sample production. After the sample is approved and an order submitted, production will begin on the remaining pieces. Please allow an additional two weeks for order production.

ADDITIONAL MATERIALS AVAILABLE BY QUOTE:

- A) XL SUPER SMOOTH BANNER: Printed with a high-quality, matte finish on 13 oz scrimless vinyl
- B) DOUBLE-SIDED SUPER SMOOTH BANNER: Printed double-sided on 13 oz scrimless blockout vinyl
- C) PAPERBOARD STANDEE: Life-size die-cut graphics made of rigid paperboard material with easel backs
- D) FOAM BOARD: A great rigid sign solution that can be printed single-sided or double-sided, recommended for short-term indoor displays
- E) SINTRA: Sintra is a rigid, expanded 3mm PVC substrate recommended for indoor long-term signage
- F) DRY-ERASE STICKIE SHEET: A flexible dry-erase adhesive material that works on any wall, door, or window
- G) DRY-ERASE MONTHLY CALENDAR: Just peel-and-stick with no tools required

Please email info@wholesalebannersonline.com or call 877.615.6055 for a custom quote on these products.



**Minimum order amount applies
to all custom-order materials**

SAMPLE PACKS

COMPLETE SWATCH PACK

8.5"w x 11"h printed samples
of the following materials:

- » 13 oz Vinyl Banner
- » Economy 13 oz Vinyl Banner
- » 18 oz Vinyl Banner
- » Mesh Vinyl Banner
- » High-Res Vinyl Banner
- » Canvas Banner
- » Satin Fabric Banner
- » Matte Fabric Banner
- » XL 13 oz Vinyl Banner
- » XL 18 oz Vinyl Banner
- » XL Mesh Banner
- » Retractable/Pennant Banner/
Vinyl Poster
- » EZ Dot Adhesive Vinyl
- » Smooth Adhesive Film
- » Adhesive Window Sign
- » Perforated Window Sign
- » Adhesive Fabric Wall Sign
- » Adhesive Non-Slip Floor Sign
- » Gallery Canvas material
- » Fabric Flag material
- » Premium Matte Table Throw Fabric
- » Magnets

PRICE: **\$9.99 each {Z}**

BANNER MATERIAL SWATCH PACK

8.5"w x 11"h printed sample of
the following materials:

- » 13 oz Vinyl Banner
- » Economy 13 oz Vinyl Banner
- » 18 oz Vinyl Banner
- » Mesh Vinyl Banner
- » High-Res Vinyl Banner
- » Canvas Banner
- » Satin Fabric Banner
- » Matte Fabric Banner
- » XL 13 oz Vinyl Banner
- » XL 18 oz Vinyl Banner
- » XL Mesh Banner

PRICE: **\$4.99 each {Z}**

FINISHED BANNER SAMPLE PACK

1'w x 2'h printed and finished
samples with hems and
grommets of the following
products:

- » 13 oz Vinyl Banner
- » 18 oz Vinyl Banner
- » Mesh Vinyl Banner
- » High-Res Vinyl Banner
- » Canvas Banner
- » Satin Fabric Banner
- » Matte Fabric Banner
- » XL 13 oz Vinyl Banner
- » XL 18 oz Vinyl Banner
- » XL Mesh Banner

PRICE: **\$9.99 each {Z}**

ADHESIVE MATERIAL SWATCH PACK

8.5"w x 11"h printed sample of
the following materials:

- » EZ Dot Adhesive Vinyl
- » Smooth Adhesive Window Film
- » Adhesive Window Sign
- » Perforated Window Sign
- » Adhesive Fabric Wall Sign
- » Adhesive Non-Slip Floor Sign

PRICE: **\$2.99 each {Z}**



ACCESSORIES



ZIP TIES

- » 10" black zip ties, pack of 10
- » Useful for securing banners to 1" or 2" poles

PRICE: **\$0.80/set {U}**



SUCTION CUPS

- » 1 3/4" clear vinyl suction cups with metal hooks
- » Recommended for hanging 3'x6' and smaller banners to windows
- » 5 suction cups per set

PRICE: **\$4.67/set {U}**



ROPE

- » Recommended for indoor or low-wind outdoor banner installations
- » Can be used with bungees to add extra length
- » Synthetic nylon, 50 ft per package

PRICE: **\$6.39 each {U}**



VELCRO STRIPS

- » Hook and Loop 1" acrylic adhesive for indoor and outdoor use
- » Will adhere to any of our vinyl banners
- » Strips are white and are sold in 1 foot increments

PRICE: **\$1.67 per linear foot {U}**



BUNGEE CORDS

- » Recommended for outdoor banner installations
- » Lessens strain on grommets and banner edges
- » 6 mm thick, available in lengths of 1 ft, 2 ft, and 3 ft

PRICE: **1' - \$3.67 EACH {U}**
2' - \$4.00 EACH {U}
3' - \$4.33 EACH {U}



YARD SIGN H-STAKES

- » Fits all corrugated signs such as Lawn and Yard Signs
- » Inserts directly into the sign flutes - no additional hardware required
- » 9 gauge wire - 24"H x 10"W galvanized wire
- » Slides into soft ground

PRICE: **\$1.27 each {U}**

Let's Go Digital

Helping the Environment
& Reaching You More
Efficiently

With the industry's largest selection of banner materials and sizes, we are the printing and dye-sublimation expert!

We provide you with significant savings by leveraging our online ordering and production efficiencies. Now that we've gone digital we can help you save time and reduce your carbon footprint. Get information on thousands of products in our digital catalog with zero paper waste.



Replace stacks of
paper catalogs with
digital, emailable files.



Shop online! Information on thousands of our quality products delivered to your inbox paper-free. Let's go Digital!

ADDITIONAL INFO

PRICING

We strive to keep consistent pricing for our customers. However, pricing is subject to change without notice.

SETUP FEES

When you submit a print-ready file that needs no adjustments from our design staff before printing, your setup fee is \$10 {P} per design. If you need help putting your artwork together, design service is available. Minimum charge is \$50 {P} per design. Any additional design work which requires more than 25 minutes per design will be charged at a rate of \$60.00 {Z} per hour. Design templates for our products and instructions to set up print-ready files are available at www.bannerfulfillment.com.

VOLUME DISCOUNTS

Volume discounts are available for most products we sell. Most banners are discounted by the total square footage of each unique item. Other units are discounted by the quantity of each item ordered. These discounts only apply to multiple copies of identical items. Any item that uses different artwork, is of a different size, or has different production specs must be ordered as a separate item.

MINIMUM CHARGES

Most products have no minimum quantity or order amount. However, certain products require intensive setup in production and therefore require minimum order amounts per item. Adhesive Window Signs and Double-Sided 18 oz Vinyl Banners have a \$75 {R} minimum charge, and Coroplast Signs have a \$200 {U} minimum charge. Custom-order items shown on page 68 require a minimum charge. These products can still be ordered at any quantity, but the minimum charge per item will apply.

SPECIAL FINISHING REQUESTS

Product pricing in this catalog includes standard finishing only. Special finishing requests will result in additional production setup charges.

Our standard finishing options for banners are as follows:

- 1" Hems - perimeter, your choice of sides, or none
- Grommets every few feet on perimeter, corners only, or none
- 3" flat pole pockets (fits 1" pole) - one or two sides
- 1" perimeter webbing (XL Mesh)

Any other requests such as special grommet placement, pole pocket sizes other than 3" flat, or hem sizes other than 1" will require an additional production setup charge.

RUSH SERVICE

Pricing includes the standard turnaround time shown on each product page. Depending on production volume, rush service may be available for an additional fee. Please call to verify that rush service is available before placing your order.

SHIPPING CHARGES

Shipping charges are based on bulk packaging of all items shipping to the same USA or Canada address. We can custom pack and ship your items in separate boxes for an additional fee.

ARTWORK

FILE TYPES

Vector art is recommended whenever possible, as it will produce the best resolution and color accuracy in your print. Vector files can be scaled to any size with no loss of resolution. Accepted vector file formats are: EPS, PDF, and AI {Adobe Illustrator}. All text must be converted to outlines and any linked images must be embedded. Raster {pixel-based} artwork is also accepted, but it limits our ability to manage color and places a limit on how large the image can be scaled

before resolution is lost. Accepted raster file types are: JPG/JPEG, TIFF, and PSD. 100 dpi resolution at actual print size is recommended for most products. Keep in mind that increasing the resolution beyond 100 dpi generally does not increase the final print quality of most products. However, some products can print with greater detail. Check each product's page in this catalog for recommended resolution settings. Please avoid sending DOC, PUB, and PPT files when possible. We cannot use these files or any images contained within them for print. They can be used to show suggested layouts, but they are not print-ready files, and will be subject to a \$50 {P} minimum fee per design. Also keep in mind that most images saved from the internet will not work unless they are specifically high-resolution or vector images. For fastest service and to avoid extra design charges, please make sure any print-ready files are set up at the same proportions as the item you are ordering. Vector files can be submitted at smaller scale as long as the proportions match. For example, artwork for a 2'x4' banner should have a height-to-width ratio of 1:2. Product templates and instructions for setting up print-ready files are available at www.bannerfulfillment.com.

PRO TIPS

When creating banner artwork, keep all important text and graphics at least 1.5" away from the edge of the design. This will ensure no part of your message is lost when hems and grommets are added. The amount of bleed to add to the edges of your artwork differs from product to product. Please refer to the bleed specs shown on each product page to set up your artwork with appropriate bleeds. For greatest visibility at a distance, use text colors that have a high contrast against the background color. This is especially recommended when ordering mesh banners. When in doubt, go with simple high-contrast colors and large block-text. To determine how visible your text will be from a distance, a good rule of thumb is 1 inch of text height for every 10 feet of distance away from

the banner. For example, if you want your message to be visible from 100' away, make sure your text is at least 10" tall. Font thickness and color contrast will also affect the range at which text will be visible.

COLOR QUALITY

CMYK

We print in CMYK 4-color process only. Please be sure all submitted files are in CMYK color mode. RGB colors cannot always be replicated in a CMYK print, especially bright neon colors. Web proofs are required to be in RGB color, so some minor color shift between the web proof and the final print is to be expected. If color accuracy is important for a job, we recommend viewing your web proofs on a color-calibrated monitor and requesting printed samples for large jobs.

COLOR MATCHING

Pantone color matching for select products is available for an additional fee of \$30 per color per line item - unless you request a color match, we cannot be responsible for color accuracy.

Slight color differences are to be expected between the original file as seen on your screen, the web proof, and the final printed product. However, we constantly test and update our printer profiles to meet G7 calibration specs and to maintain the greatest color accuracy possible. For best color results, please submit vector files using either CMYK or Pantone Plus Solid Coated colors. Pantones are especially recommended for closest color accuracy in fabric products such as fabric banners, flags, and table covers.

Print colors are affected by the finish of the material (gloss finish = brighter colors; matte finish = darker colors) and the inks used for each method of printing. Vinyl products are digitally printed, while fabric products are printed using dye sublimation. Each process uses its own ink set, and each will have different results when printed on different materials.

MATERIAL SPECS

WEIGHT

Vinyl material weight is measured by the number of ounces per square yard. The higher the ounce count, the thicker, more opaque, the more durable the material is.

OUTDOOR BANNERS

All of our outdoor vinyl banner material is constructed with a polyester mesh scrim woven into the material to provide superb outdoor strength. The density of this scrim is measured in units called deniers. Denier in vinyl banners usually ranges from 200x200 to 1,000x1000. A higher denier count creates a stronger banner and a smoother print. We know that durability is key to a successful outdoor advertising project, which is why we only use 1000x1000 denier material for our outdoor banners.

INDOOR BANNERS

Our indoor banners (such as High-Res Vinyl Banners) are printed on a smooth scrimless vinyl that can last years indoors but is not durable enough to be used for long term outdoor displays.

FINISHED PRODUCT SIZES

All banner and sign sizes are approximate. Items with no hems and trimmed edges will be within .25" of ordered size. Due to variations in hemming, banners with hems may be slightly shorter or longer than the ordered size, usually within .5".

CUSTOM SIZES

Most banners and signs priced by the square foot are also available in custom sizes. To order a custom size, round up to the next standard size for pricing and include the dimensions of your custom size with your instructions. There is no extra charge to produce a custom size.

PRODUCT GUARANTEE

We use the highest quality materials and hardware available, and most products can last years if installed and stored properly. Handling, installation, and storage are critical and not within our control, and while we guarantee your products will arrive free of any defects, we must limit our warranties to the following:

VINYL BANNERS

13 oz Vinyl Banners, 18 oz Vinyl Banners, and Mesh Vinyl Banners - 90 day outdoor warranty (does not apply to XL or Double-Sided Banners) We recommend using bungee cords when hanging banners outdoors

in windy areas. Bungees reduce stress on the banner material and help your banner resist tearing in strong winds, unlike rope, twine, wire, or zip ties. You can also use a combination of rope and bungees when extra length is needed.

DELUXE FEATHER FLAG HARDWARE

Hardware comes with a two-year outdoor warranty when used exclusively with single-sided feather flags. The flags themselves have no warranty.

RETRACTABLE BANNER HARDWARE

Telescoping Pro, Double-Sided Indoor, and Double-Sided Outdoor Retractable hardware comes with a one year warranty. Economy Retractable and Table Top Retractable hardware comes with a 6-month warranty.

RETURN/REPLACEMENT POLICY

All products are custom-printed just for you, so returns and refunds are only accepted if:

- A product arrives with a malfunction, a print or finishing error, or damage from transit
- A warranted product which has been exposed only to normal wear and tear becomes unusable during the warranty period (grommets tear out of a banner, premature image fading, wind damage, retractable hardware is not working correctly, etc.)

By ordering, you agree that you must notify us of any problems with non-warranted products within two weeks of delivery to be eligible for free replacements or full refunds. If the defect is visible, photos must be submitted for verification.

BANNER FULFILLMENT

Printing & Dye-Sublimation Experts

{2017 CATALOG}

Your #1 Source for Custom Banners and Signs!

